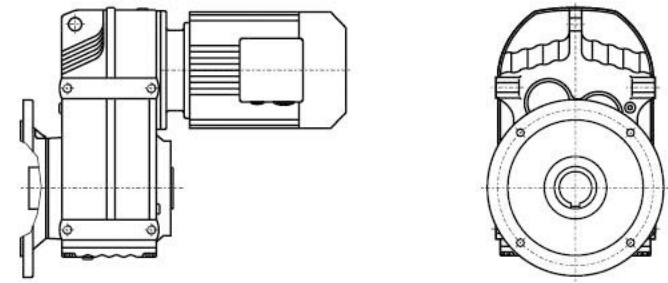
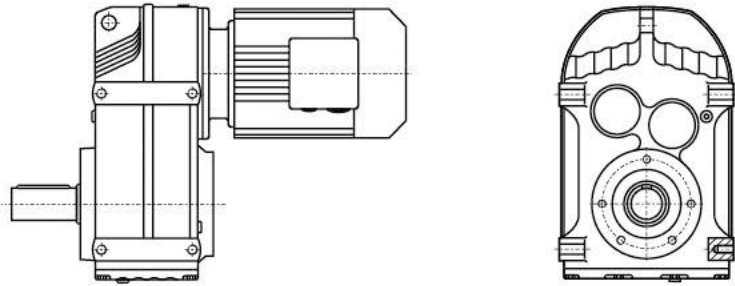


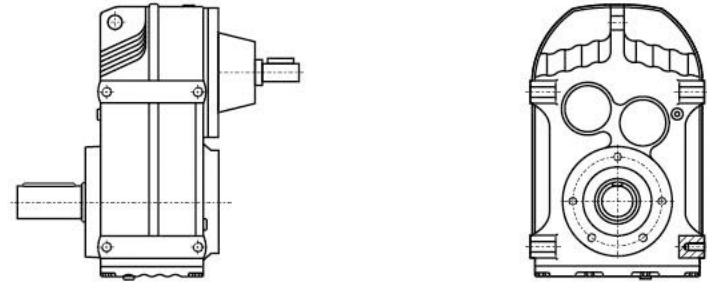
F系列减速机有以下设计方案：
F series gear units are available in the following designs:



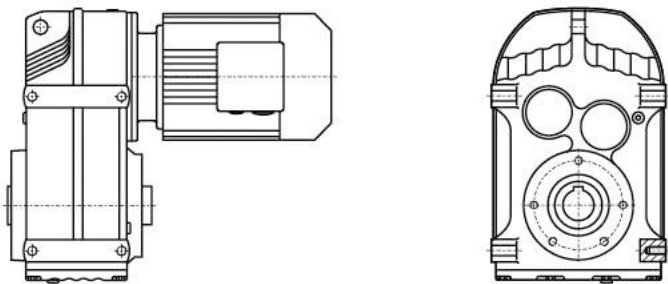
FAF..Y..
法兰空心轴安装平行轴斜齿轮减速机
Flange-mounted parallel shaft helical gear units with hollow shaft



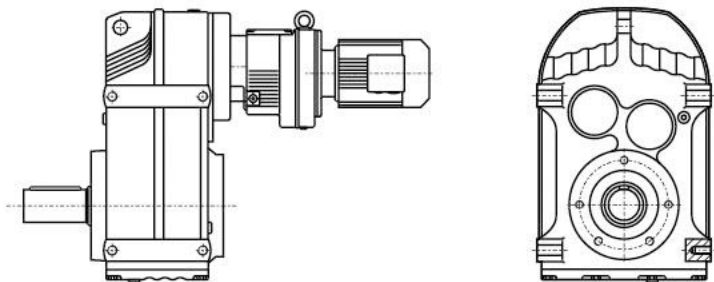
F..Y..
底脚轴伸式安装平行轴斜齿轮减速机
Foot-mounted parallel shaft helical gear units with solid shaft



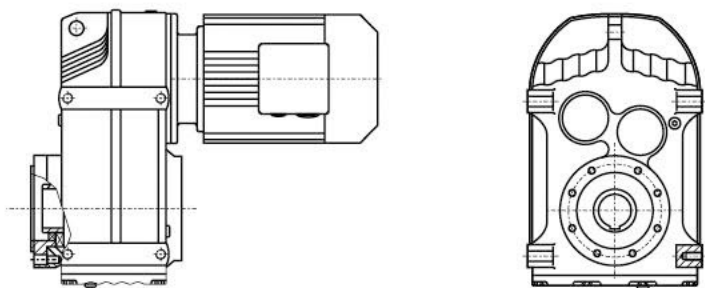
F (FF、FA、FAF、FAZ) S...
轴输入的平行轴斜齿轮减速机
Shaft input parallel shaft helical gear units



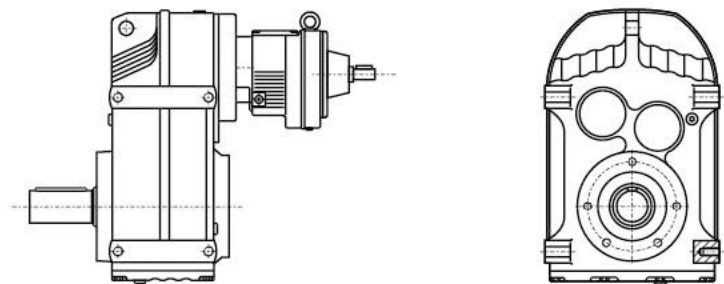
FA..Y..
空心轴安装平行轴斜齿轮减速机
Parallel shaft helical gear units with hollow shaft



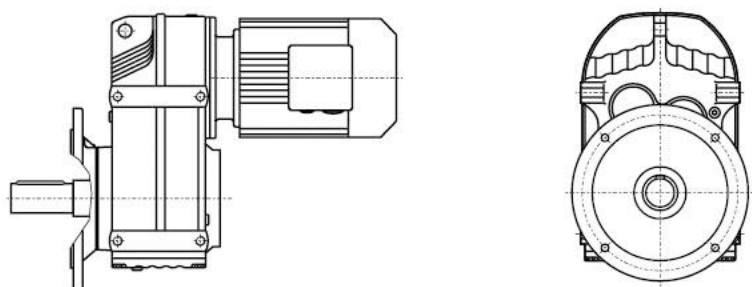
F (FF、FA、FAF、FAZ) ...R...Y...
组合式平行轴斜齿轮减速机
Combinatorial parallel shaft helical gear units



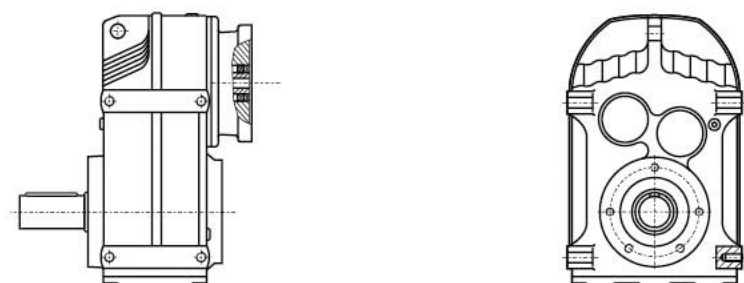
FAZ..Y..
小法兰空心轴安装平行轴斜齿轮减速机
Short-flange-mounted parallel shaft helical gear units with hollow shaft



F (FF、FA、FAF、FAZ) S...R...
轴输入的组式平行轴斜齿轮减速机
Shaft input combinatorial parallel shaft helical gear units



FF..Y..
法兰轴伸式安装平行轴斜齿轮减速机
Flange-mounted parallel shaft helical gear units with solid shaft



F (FF、FA、FAF、FAZ) ...Y...
电机用户自配或配特殊电机时需加联接法兰
When equipping the user's motor or the special one, the flange is required to be connected



型号与标记:
Type Designations:

<p>F F 37-Y 0.55-4P-23.88-M1- 270°</p>	<p>F F 37-Y 0.55-4P-23.88-M1- 270°</p>																																								
<p>减速机类型: 平行轴斜齿轮减速机</p>	<p>Gear units type: Parallel shaft helical gear units</p>																																								
<p>结构形式:</p> <table border="0"> <tr><td>普通轴伸式 (省略)</td><td></td></tr> <tr><td>轴装式</td><td>A</td></tr> <tr><td>轴伸法兰式</td><td>F</td></tr> <tr><td>轴装法兰式</td><td>AF</td></tr> <tr><td>轴装小法兰式</td><td>AZ</td></tr> <tr><td>普通轴伸式, 轴输入</td><td>S</td></tr> <tr><td>普通轴装式, 轴输入</td><td>AS</td></tr> <tr><td>轴伸法兰式, 轴输入</td><td>FS</td></tr> <tr><td>轴装法兰式, 轴输入</td><td>AFS</td></tr> <tr><td>*带锁紧盘式</td><td>H..(H, HF, HZ, HT)</td></tr> </table>	普通轴伸式 (省略)		轴装式	A	轴伸法兰式	F	轴装法兰式	AF	轴装小法兰式	AZ	普通轴伸式, 轴输入	S	普通轴装式, 轴输入	AS	轴伸法兰式, 轴输入	FS	轴装法兰式, 轴输入	AFS	*带锁紧盘式	H..(H, HF, HZ, HT)	<p>Structure:</p> <table border="0"> <tr><td>Foot-mounted solid shaft output</td><td>(-)</td></tr> <tr><td>Hollow shaft output</td><td>A</td></tr> <tr><td>Flange-mounted solid shaft output</td><td>F</td></tr> <tr><td>Flange-mounted hollow shaft output</td><td>AF</td></tr> <tr><td>Short-flange-mounted hollow shaft output</td><td>AZ</td></tr> <tr><td>Foot-mounted solid shaft output, shaft input</td><td>S</td></tr> <tr><td>Hollow shaft output, shaft input</td><td>AS</td></tr> <tr><td>Flange-mounted solid shaft output, shaft input</td><td>FS</td></tr> <tr><td>Flange-mounted hollow shaft output, shaft input</td><td>AFS</td></tr> <tr><td>* Hollow shaft output with shrink disk</td><td>H..(H, HF, HZ, HT)</td></tr> </table>	Foot-mounted solid shaft output	(-)	Hollow shaft output	A	Flange-mounted solid shaft output	F	Flange-mounted hollow shaft output	AF	Short-flange-mounted hollow shaft output	AZ	Foot-mounted solid shaft output, shaft input	S	Hollow shaft output, shaft input	AS	Flange-mounted solid shaft output, shaft input	FS	Flange-mounted hollow shaft output, shaft input	AFS	* Hollow shaft output with shrink disk	H..(H, HF, HZ, HT)
普通轴伸式 (省略)																																									
轴装式	A																																								
轴伸法兰式	F																																								
轴装法兰式	AF																																								
轴装小法兰式	AZ																																								
普通轴伸式, 轴输入	S																																								
普通轴装式, 轴输入	AS																																								
轴伸法兰式, 轴输入	FS																																								
轴装法兰式, 轴输入	AFS																																								
*带锁紧盘式	H..(H, HF, HZ, HT)																																								
Foot-mounted solid shaft output	(-)																																								
Hollow shaft output	A																																								
Flange-mounted solid shaft output	F																																								
Flange-mounted hollow shaft output	AF																																								
Short-flange-mounted hollow shaft output	AZ																																								
Foot-mounted solid shaft output, shaft input	S																																								
Hollow shaft output, shaft input	AS																																								
Flange-mounted solid shaft output, shaft input	FS																																								
Flange-mounted hollow shaft output, shaft input	AFS																																								
* Hollow shaft output with shrink disk	H..(H, HF, HZ, HT)																																								
<p>规格: (见选型参数表)</p>	<p>Size: (see selection table)</p>																																								
<p>电机代号:</p> <table border="0"> <tr><td>普通 (更新)</td><td>Y(Y2)</td></tr> <tr><td>防 爆</td><td>B</td></tr> <tr><td>直 流</td><td>Z</td></tr> <tr><td>制 动</td><td>YEJ</td></tr> <tr><td>多 速</td><td>D</td></tr> <tr><td>变 频</td><td>YVP</td></tr> <tr><td>电磁调速</td><td>YCT</td></tr> <tr><td>冶金起重</td><td>R</td></tr> <tr><td>变频制动</td><td>YVPJ</td></tr> <tr><td>辊 道</td><td>G</td></tr> </table>	普通 (更新)	Y(Y2)	防 爆	B	直 流	Z	制 动	YEJ	多 速	D	变 频	YVP	电磁调速	YCT	冶金起重	R	变频制动	YVPJ	辊 道	G	<p>Motor code:</p> <table border="0"> <tr><td>Ordinary(renew)</td><td>Y(Y2)</td></tr> <tr><td>Flame-proof</td><td>B</td></tr> <tr><td>Direct current</td><td>Z</td></tr> <tr><td>Brake</td><td>YEJ</td></tr> <tr><td>Multi-speed</td><td>D</td></tr> <tr><td>Variable frequency</td><td>YVP</td></tr> <tr><td>Electromagnetism speed modulation</td><td>YCT</td></tr> <tr><td>Hoisting in metallurgy</td><td>R</td></tr> <tr><td>Variable frequency and brake</td><td>YVPJ</td></tr> <tr><td>Roller tables</td><td>G</td></tr> </table>	Ordinary(renew)	Y(Y2)	Flame-proof	B	Direct current	Z	Brake	YEJ	Multi-speed	D	Variable frequency	YVP	Electromagnetism speed modulation	YCT	Hoisting in metallurgy	R	Variable frequency and brake	YVPJ	Roller tables	G
普通 (更新)	Y(Y2)																																								
防 爆	B																																								
直 流	Z																																								
制 动	YEJ																																								
多 速	D																																								
变 频	YVP																																								
电磁调速	YCT																																								
冶金起重	R																																								
变频制动	YVPJ																																								
辊 道	G																																								
Ordinary(renew)	Y(Y2)																																								
Flame-proof	B																																								
Direct current	Z																																								
Brake	YEJ																																								
Multi-speed	D																																								
Variable frequency	YVP																																								
Electromagnetism speed modulation	YCT																																								
Hoisting in metallurgy	R																																								
Variable frequency and brake	YVPJ																																								
Roller tables	G																																								
<p>电机功率、极数: (见选型参数表)</p>	<p>Motor power, pole : (see selection table)</p>																																								
<p>传动比: (见选型参数表)</p>	<p>Ratio: (see selection table)</p>																																								
<p>安装形式: M1、M2、M3、M4、M5、M6 (见第134页)</p>	<p>Mounting position: M1、M2、M3、M4、M5、M6(see page 134)</p>																																								
<p>电机接线盒位置: 0°、90°、180°、270° (见第134页)</p>	<p>Position of the motor thermal box: 0°、90°、180°、270° (see page 134)</p>																																								

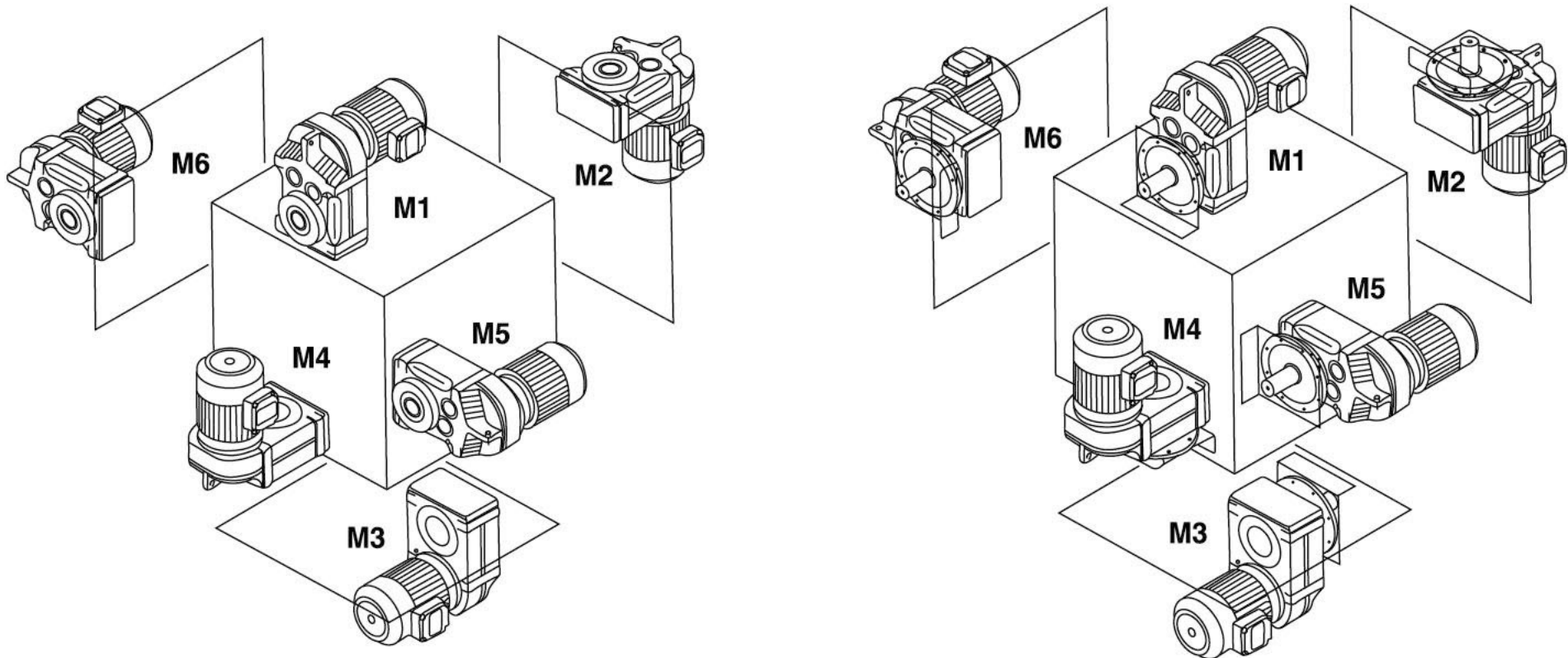
*带锁紧盘式, 详见454-455页。

*Hollow shaft output with shrink disk, see P454-455 for detail.

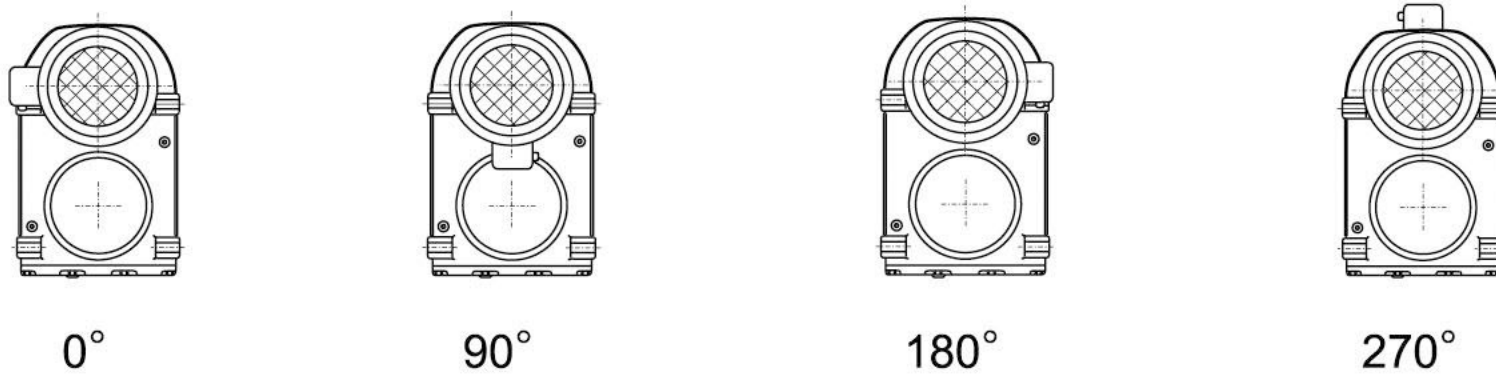




安装形式：
Mounting position:



电机接线盒位置：
Position of the motor thermal box



F

输入功率及许用转矩
Input power rating and permissible torque

规格 Size	37	47	57	67	77	87	97	107	127	157
结构形式 Structure	F FA FF FAF FAZ									
输入功率 Input power rating(kw)	0.18~3	0.18~3	0.18~5.5	0.18~5.5	0.37~11	0.75~22	1.1~30	2.2~45	7.5~90	11~200
传动比 Ratio	3.81~ 128.51	5.06~ 189.39	5.18~ 199.70	4.21~ 228.99	4.30~ 281.71	4.12~ 270.68	4.68~ 280.76	6.20~ 254.40	4.63~ 172.17	11.92~ 267.43
许用转矩(N.m) Permissible torque	200	400	600	820	1500	3000	4300	7840	12000	18000

减速机重量
Gear unit weight

规格 Size	37	47	57	67	77	87	97	107	127	157
重量(kg) Weight	13	18	34	55	90	150	260	402	700	950

所注重量为平均值, 仅供参考
The weights are mean values, only for reference.



润滑油量表
Lubrication table

F...:

规格 Size	润滑油量 (升)			Fill quantity in liters		
	M1	M2	M3	M4	M5	M6
F37	1	1.2	0.7	1.2	1	1.1
F47	1.5	1.8	1.1	1.9	1.5	1.7
F57	2.6	3.7	2.1	3.5	2.8	2.9
F67	2.7	3.8	1.9	3.8	2.9	3.2
F77	5	7.3	4.3	8	6	6.3
F87	10	13.0	7.7	13.8	10.8	11
F97	18.5	22.5	12.6	25.2	18.5	20
F107	24.5	32	19.5	37.5	27	27
F127	40.5	55	34	61	46.5	47
F157	69	104	63	105	86	78

FF...:

规格 Size	润滑油量 (升)			Fill quantity in liters		
	M1	M2	M3	M4	M5	M6
FF37	1	1.2	0.7	1.3	1	1.1
FF47	1.6	1.9	1.1	1.9	1.5	1.7
FF57	2.8	3.8	2.1	3.7	2.9	3
FF67	2.7	3.8	1.9	3.8	2.9	3.2
FF77	5.1	7.3	4.3	8.1	6	6.3
FF87	10.3	13.2	7.8	14.1	11	11.2
FF97	19	22.5	12.6	25.5	18.9	20.5
FF107	25.5	32	19.5	38.5	27.5	28
FF127	41.5	56	34	63	46.5	49
FF157	72	105	64	106	87	79

FA...、FAF...、FAZ...:

规格 Size	润滑油量 (升)			Fill quantity in liters		
	M1	M2	M3	M4	M5	M6
F..37	1	1.2	0.7	1.2	1	1.1
F..47	1.5	1.8	1.1	1.9	1.5	1.7
F..57	2.7	3.8	2.1	3.6	2.9	3
F..67	2.7	3.8	1.9	3.8	2.9	3.2
F..77	5	7.3	4.3	8	6	6.3
F..87	10	13.0	7.7	13.8	10.8	11
F..97	18.5	22.5	12.6	25.0	18.5	20
F..107	24.5	32	19.5	37.5	27	27
F..127	39	55	34	61	45	46.5
F..157	68	103	62	104	85	77

F



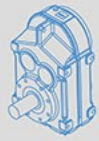
输出转速 Output speed r/min	输出扭矩 Output torque Nm	传动比 Ratio i	使用系数 Service factor f _B	机型号 Type Type	极数 Pole p	输出转速 Output speed r/min	输出扭矩 Output torque Nm	传动比 Ratio i	使用系数 Service factor f _B	机型号 Type Type	极数 Pole p
0.18kW						0.18kW					
0.11	14324	13014	0.79			2.5	616	560	0.92		
0.12	12930	11748	0.87	FA 127R77	4	2.7	558	507	1.01		
0.14	11305	10271	1.00	FAF127R77	4	3.1	499	453	1.13		
0.16	9797	8901	1.15	F 127R77	4	3.3	469	426	1.20	FA 57R37	4
0.18	8478	7703	1.33	FF 127R77	4	3.6	426	387	1.32	FAF57R37	4
0.21	7449	6768	1.51			4.2	363	330	1.55	F 57R37	4
						4.7	328	298	1.72	FF 57R37	4
						5.3	288	262	1.96		
						6.2	249	226	2.3		
						7.0	220	200	2.6		
0.16	9408	8548	0.78			4.1	371	337	1.01		
0.18	8448	7675	0.87			4.6	331	301	1.13		
0.21	7281	6615	1.01			4.7	322	293	1.17		
0.24	6406	5820	1.15	FA 107R77	4	4.9	314	285	1.20	FA 47R17	4
0.27	5749	5223	1.28	FAF107R77	4	6.0	253	230	1.49	FAF47R17	4
0.30	5027	4567	1.47	F 107R77	4	6.1	250	227	1.50	F 47R17	4
0.39	3875	3521	1.90	FF 107R77	4	6.4	238	216	1.58	FF 47R17	4
0.46	3343	3037	2.2			7.4	207	188	1.82		
0.50	3033	2756	2.4			7.9	194	176	1.94		
0.59	2607	2369	2.8								
0.67	2276	2068	3.2			8.2	187	170	1.00	FA 37R17	4
						8.3	185	168	1.02	FAF37R17	4
						10	146	133	1.28	F 37R17	4
						11	142	129	1.32	FF 37R17	4
0.32	4815	4375	0.84								
0.35	4343	3946	0.9			3.0	536	281.71	2.6	FA 77	6
0.41	3743	3401	1.1			3.2	500	262.93	2.8	FAF77	6
0.47	3246	2949	1.2	FA 97R57	4	3.8	429	225.79	3.3	F 77	6
0.54	2851	2590	1.4	FAF97R57	4					FF 77	6
0.61	2495	2267	1.6	F 97R57	4						
0.70	2189	1989	1.8	FF 97R57	4						
0.80	1914	1739	2.1			3.7	435	228.99	1.77	FA 67	6
0.90	1697	1542	2.4			4.4	371	195.39	2.1	FAF67	6
1.0	1475	1340	2.7			5.0	325	170.85	2.4	F 67	6
1.2	1301	1182	3.1							FF 67	6
0.48	3171	2881	0.9			6.1	266	228.99	2.9	FA 67	4
0.54	2834	2575	1.0			7.1	227	195.39	3.4	FAF67	4
0.63	2420	2199	1.2			8.1	199	170.85	3.9	F 67	4
0.72	2124	1930	1.3	FA 87R57	4					FF 67	4
0.81	1881	1709	1.5	FAF87R57	4						
0.93	1643	1493	1.7	F 87R57	4	4.3	380	199.70	1.49		
1.1	1431	1300	2.0	FF 87R57	4	4.6	349	183.60	1.62	FA 57	6
1.2	1264	1148	2.2			5.4	299	157.09	1.89	FAF57	6
1.4	1112	1010	2.5			6.2	259	136.16	2.2	F 57	6
1.6	976	887	2.9			6.7	242	127.27	2.3	FF 57	6
1.8	859	780	3.3			7.7	209	110.01	2.7		
0.8	1902	1728	0.7			7.0	232	199.70	2.4	FA 57	4
0.9	1698	1543	0.8			7.6	213	183.60	2.6	FAF57	4
1.0	1490	1354	0.9	FA 77R37	4	8.8	183	157.09	3.1	F 57	4
1.2	1316	1196	1.1	FAF77R37	4	10	158	136.16	3.6	FF 57	4
1.3	1156	1050	1.2	F 77R37	4	11	148	127.27	3.8		
1.5	998	907	1.4	FF 77R37	4						
1.7	892	810	1.6			4.5	360	189.39	1.0	FA 47	6
2.0	781	710	1.8			4.9	331	174.13	1.1	FAF47	6
2.3	660	600	2.1			5.7	283	148.98	1.3	F 47	6
						6.6	245	129.14	1.5	FF 47	6
						7.0	229	120.70	2.5		
1.6	944	858	0.82								
1.9	812	738	0.95			7.3	220	189.39	1.71	FA 47	4
2.2	689	626	1.12			8.0	202	174.13	1.86	FAF47	4
2.4	630	572	1.22			9.3	173	148.98	2.2	F 47	4
2.8	550	500	1.40			11	150	129.14	2.5	FF 47	4
2.8	547	497	1.41	FA 67R37	4	12	140	120.70	2.7		
3.1	500	454	1.54	FAF67R37	4						
3.3	470	427	1.64	F 67R37	4						
3.5	431	392	1.79	FF 67R37	4						
3.8	403	366	1.91								
4.2	367	333	2.1								
4.7	327	297	2.4								
5.3	287	261	2.7								
5.8	262	238	2.9								
7.0	220	200	3.5								

F



输出转速 Output speed r/min	输出扭矩 Output torque Nm	传动比 Ratio i	使用系数 Service factor f _B	机型号 Type Type	极数 Pole p	输出转速 Output speed r/min	输出扭矩 Output torque Nm	传动比 Ratio i	使用系数 Service factor f _B	机型号 Type Type	极数 Pole p
0.18kW						0.25kW					
7.2	224	117.88	0.84	FA 37	6	0.72	2950	1930	1.0		
8.5	191	100.36	0.99	FAF37	6	0.81	2613	1709	1.1		
9.8	164	86.53	1.14	F 37	6	0.93	2282	1493	1.2	FA 87R57	4
11	153	80.65	1.23	FF 37	6	1.1	1987	1300	1.4	FAF87R57	4
12	134	70.50	1.40			1.2	1755	1148	1.6	F 87R57	4
11	149	128.51	1.26			1.4	1544	1010	1.8	FF 87R57	4
12	137	117.88	1.37			1.6	1356	887	2.1		
14	117	100.36	1.61			1.8	1192	780	2.4		
16	101	86.53	1.87			2.1	1030	674	2.7		
17	94	80.65	2.0			1.3	1605	1050	0.88		
20	82	70.50	2.3			1.5	1387	907	1.02		
21	77	66.09	2.4			1.7	1238	810	1.14	FA 77R37	4
24	68	58.32	2.8			2.0	1085	710	1.30	FAF77R37	4
25	63	54.54	3.0			2.3	917	600	1.54	F 77R37	4
27	60	51.70	3.1			2.6	803	525	1.76	FF 77R37	4
30	55	47.02	3.4			3.0	717	469	1.97		
32	51	43.83	3.7			3.4	630	412	2.2		
36	45	38.31	4.2			2.2	980	641	0.79		
39	42	35.91	4.5	FA 37	4	2.4	874	572	0.88		
44	37	31.69	5.1	FAF37	4	2.7	778	509	0.99		
49	33	28.09	5.8	F 37	4	2.8	764	500	1.01	FA 67R37	4
58	28	23.88	6.8	FF 37	4	3.1	694	454	1.11	FAF67R37	4
59	27	23.63	6.8			3.2	668	437	1.15	F 67R37	4
68	24	20.57	7.9			3.5	599	392	1.29	FF 67R37	4
72	22	19.27	8.4			4.2	509	333	1.51		
82	20	17.03	9.5			4.7	454	297	1.70		
88	18	15.81	10.2			5.3	399	261	1.93		
97	17	14.33	11			5.8	364	238	2.1		
108	15	12.87	13			3.6	592	387	0.95		
125	13	11.08	14			4.2	504	330	0.97		
133	12	10.42	14			5.6	381	249	1.11		
155	10	8.97	16			3.6	584	382	1.12	FA 57R37	4
185	8.7	7.51	16			4.2	505	330	1.21	FAF57R37	4
204	7.9	6.81	17			4.7	456	298	1.24	F 57R37	4
227	7.1	6.11	18			5.3	401	262	1.48	FF 57R37	4
264	6.1	5.27	19			6.2	345	226	1.63		
281	5.8	4.95	20			7.0	306	200	1.84		
326	5.0	4.26	21			8.4	254	166	2.2		
0.25kW						0.25kW					
0.16	13607	8901	0.83			6.0	352	230	1.07		
0.18	11775	7703	0.96	FA 127R77	4	6.1	347	227	1.08		
0.21	10346	6768	1.09	FAF127R77	4	6.4	330	216	1.14		
0.23	9131	5973	1.24	F 127R77	4	7.2	294	192	1.28	FA 47R17	4
0.27	7760	5076	1.45	FF 127R77	4	7.4	287	188	1.31	FAF47R17	4
0.31	6827	4466	1.7			7.9	269	176	1.40	F 47R17	4
0.24	8897	5820	0.83			8.0	264	173	1.42	FF 47R17	4
0.27	7984	5223	0.92			9.4	226	148	1.66		
0.30	6982	4567	1.06			11	199	130	1.89		
0.40	5262	3442	1.40	FA 107R77	4	10	203	133	0.92	FA 37R17	4
0.46	4643	3037	1.59	FAF107R77	4	11	197	129	0.95	FAF37R17	4
0.50	4213	2756	1.75	F 107R77	4	12	180	118	1.04	F 37R17	4
0.59	3621	2369	2.0	FF 107R77	4	14	150	98	1.25	FF 37R17	4
0.67	3161	2068	2.3			16	133	87	1.41		
0.87	2441	1597	3.0			3.0	744	281.71	1.9	FA 77	6
0.99	2142	1401	3.4			3.2	694	262.93	2.0	FAF77	6
0.47	4508	2949	0.90			3.8	596	225.79	2.4	F 77	6
0.54	3959	2590	1.02			4.3	524	198.31	2.7	FF 77	6
0.61	3466	2267	1.17	FA 97R57	4	4.5	497	188.40	2.8		
0.63	3362	2199	1.20	FAF97R57	4						
0.80	2658	1739	1.52	F 97R57	4						
0.90	2357	1542	1.71	FF 97R57	4						
1.0	2032	1329	2.0								
1.2	1807	1182	2.2								
1.3	1578	1032	2.6								

F



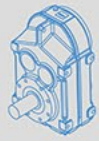
输出转速 Output speed r/min	输出扭矩 Output torque Nm	传动比 Ratio i	使用系数 Service factor f _B	机型号 Type Type	极数 Pole p	输出转速 Output speed r/min	输出扭矩 Output torque Nm	传动比 Ratio i	使用系数 Service factor f _B	机型号 Type Type	极数 Pole p
0.25kW						0.25kW					
3.7	605	228.99	1.3	FA 67	6	204	11	6.81	12		
4.4	516	195.39	1.5	FAF67	6	227	10	6.11	13	FA 37	4
5.0	451	170.85	1.7	F 67	6	264	8.5	5.27	14	FAF37	4
5.2	429	162.31	1.8	FF 67	6	281	8.0	4.95	14	F 37	4
6.0	376	142.40	2.1			326	6.9	4.26	15	FF 37	4
0.37kW						0.37kW					
6.1	370	228.99	2.1	FA 67	4	0.21	15312	6768	0.74		
7.1	315	195.39	2.4	FAF67	4	0.23	13514	5973	0.83	FA 127R77	4
8.1	276	170.85	2.8	F 67	4	0.27	11484	5076	0.98	FAF127R77	4
8.6	262	162.31	2.9	FF 67	4	0.31	10104	4466	1.12	F 127R77	4
9.8	230	142.40	3.4			0.36	8751	3868	1.29	FF 127R77	4
4.3	527	199.70	1.07			0.41	7699	3403	1.47		
4.6	485	183.60	1.16	FA 57	6	0.47	6758	2987	1.67		
5.4	415	157.09	1.4	FAF57	6	0.46	6871	3037	1.07	FA 107R77	4
6.2	360	136.16	1.6	F 57	6	0.50	6235	2756	1.16	FAF107R77	4
6.7	336	127.27	1.7	FF 57	6	0.59	5360	2369	1.35	F 107R77	4
7.7	290	110.01	1.9			0.67	4679	2068	1.54	FF 107R77	4
7.0	322	199.70	1.7			0.87	3613	1597	2.0		
7.6	296	183.60	1.9	FA 57	4	0.61	5129	2267	0.79		
8.8	254	157.09	2.2	FAF57	4	0.70	4505	1991	0.90		
10	220	136.16	2.6	F 57	4	0.80	3934	1739	1.03	FA 97R57	4
11	205	127.27	2.7	FF 57	4	0.90	3489	1542	1.16	FAF97R57	4
13	178	110.01	3.2			1.0	3032	1340	1.3	F 97R57	4
5.7	393	148.98	1.0	FA 47	6	1.2	2674	1182	1.5	FF 97R57	4
6.6	341	129.14	1.1	FAF47	6	1.3	2335	1032	1.7		
7.0	319	120.70	1.2	F 47	6	1.5	2052	907	2.0		
8.1	275	104.33	1.4	FF 47	6	1.1	2941	1300	1.0		
7.3	306	189.39	1.2			1.2	2597	1148	1.1		
8.0	281	174.13	1.3	FA 47	4	1.4	2285	1010	1.2	FA 87R57	4
9.3	241	148.98	1.6	FAF47	4	1.6	2007	887	1.4	FAF87R57	4
11	209	129.14	1.8	F 47	4	1.8	1765	780	1.6	F 87R57	4
12	195	120.70	1.9	FF 47	4	2.1	1525	674	1.8	FF 87R57	4
13	168	104.33	2.2			2.3	1378	609	2.0		
16	143	88.65	2.6			2.7	1165	515	2.4		
11	207	128.51	0.9			3.1	1023	452	2.8		
12	190	117.88	1.0			1.7	1833	810	0.77		
14	162	100.36	1.2			2.0	1606	710	0.88		
16	140	86.53	1.3			2.3	1357	600	1.04	FA 77R37	4
17	130	80.65	1.4			2.6	1188	525	1.19	FAF77R37	4
20	114	70.50	1.7			3.0	1061	469	1.33	F 77R37	4
21	107	66.09	1.8			3.4	932	412	1.51	FF 77R37	4
24	94	58.32	2.0			3.9	808	357	1.75		
25	88	54.54	2.1			4.4	710	314	1.98		
27	83	51.70	2.3			3.3	966	427	0.80		
30	76	47.02	2.5			3.8	828	366	0.93	FA 67R37	4
32	71	43.83	2.7			4.3	731	323	1.05	FAF67R37	4
36	62	38.31	3.0	FA 37	4	4.8	656	290	1.17	F 67R37	4
39	58	35.91	3.2	FAF37	4	5.4	581	257	1.33	FF 67R37	4
44	51	31.69	3.7	F 37	4	6.3	498	220	1.55		
49	45	28.09	4.1	FF 37	4	5.3	593	262	0.95		
58	39	23.88	4.9			5.6	563	249	1.00		
59	38	23.63	4.9			6.2	511	226	1.10	FA 57R37	4
68	33	20.57	5.7			7.0	452	200	1.25	FAF57R37	4
72	31	19.27	6.0			7.1	446	197	1.27	F 57R37	4
82	27	17.03	6.8			7.7	410	181	1.38	FF 57R37	4
88	26	15.81	7.4			8.4	376	166	1.50		
97	23	14.33	8.1			9.1	344	152	1.64		
108	21	12.87	9.0			10	303	134	1.86		
125	18	11.08	10								
133	17	10.42	10								
155	14	8.97	11								
185	12	7.51	11								

F



输出转速 Output speed r/min	输出扭矩 Output torque Nm	传动比 Ratio i	使用系数 Service factor f _B	机型号 Type Type	极数 Pole p	输出转速 Output speed r/min	输出扭矩 Output torque Nm	传动比 Ratio i	使用系数 Service factor f _B	机型号 Type Type	极数 Pole p
0.37kW						0.37kW					
8.0	391	173	0.96	FA 47R17	4	32	105	43.83	1.80		
9.5	330	146	1.14	FAF47R17	4	36	92	38.31	2.1		
11	292	129	1.29	F 47R17	4	39	86	35.91	2.2		
				FF 47R17	4	44	76	31.69	2.5		
2.4	1400	271.92	2.0	FA 87	8	49	67	28.09	2.8		
2.5	1313	254.93	2.1	FAF87	8	58	57	23.88	3.3		
2.8	1177	228.57	2.4	F 87	8	59	56	23.63	3.3		
3.3	1014	196.85	2.8	FF 87	8	68	49	20.57	3.8		
3.1	1063	271.92	2.7	FA 87	6	72	46	19.27	4.1		
3.3	996	254.93	2.8	FAF87	6	82	41	17.03	4.6	FA 37	4
3.7	893	228.57	3.2	F 87	6	88	38	15.81	5.0	FAF37	4
				FF 87	6	97	34	14.33	5.5	F 37	4
3.8	882	225.79	1.6	FA 77	6	108	31	12.87	6.1	FF 37	4
4.3	775	198.31	1.8	FAF77	6	125	26	11.08	6.7		
4.5	736	188.40	1.9	F 77	6	133	25	10.42	7.0		
5.1	651	166.47	2.2	FF 77	6	155	21	8.97	7.6		
6.0	556	142.27	2.5			185	18	7.51	7.7		
4.9	673	281.71	2.1	FA 77	4	204	16	6.81	8.1		
5.3	628	262.93	2.2	FAF77	4	227	15	6.11	8.7		
6.2	540	225.79	2.6	F 77	4	264	13	5.27	9.3		
7.0	474	198.31	3.0	FF 77	4	281	12	4.95	9.5		
						326	10	4.26	10		
0.55kW						0.55kW					
4.4	764	195.39	1.01	FA 67	6	0.22	21141	6286	0.80		
5.0	668	170.85	1.15	FAF67	6	0.26	18174	5404	0.93		
5.2	634	162.31	1.22	F 67	6	0.50	9336	2776	1.81	FA 157R97	4
6.0	556	142.40	1.4	FF 67	6	0.57	8162	2427	2.1	FAF157R97	4
7.0	472	120.79	1.6			0.83	5630	1674	3.0	F 157R97	4
						1.1	4399	1308	3.8	FF 157R97	4
6.1	547	228.99	1.41	FA 67	4	1.2	3931	1169	4.3		
7.1	467	195.39	1.65	FAF67	4						
8.1	408	170.85	1.89	F 67	4	0.36	13009	3868	0.87	FA 127R77	4
8.6	388	162.31	1.99	FF 67	4	0.41	11445	3403	0.99	FAF127R77	4
9.8	340	142.40	2.3			0.47	10046	2987	1.12	F 127R77	4
12	289	120.79	2.7							FF 127R77	4
5.4	614	157.09	0.92	FA 57	6						
6.2	532	136.16	1.06	FAF57	6	0.59	7967	2369	0.92		
6.7	497	127.27	1.13	F 57	6	0.67	6955	2068	1.06		
7.7	430	110.01	1.31	FF 57	6	0.76	6141	1826	1.20		
7.0	477	199.70	1.18	FA 57	4	0.87	5371	1597	1.37	FA 107R77	4
7.6	439	183.60	1.29	FAF57	4	0.99	4712	1401	1.56	FAF107R77	4
8.8	375	157.09	1.50	F 57	4	1.19	3921	1166	1.88	F 107R77	4
10	325	136.16	1.73	FF 57	4	1.28	3656	1087	2.0	FF 107R77	4
11	304	127.27	1.85			1.46	3195	950	2.3		
13	263	110.01	2.1			1.67	2805	834	2.6		
15	223	93.47	2.5			2.17	2152	640	3.4		
17	199	83.46	2.8								
9	356	148.98	1.06	FA 47	4	1.04	4507	1340	0.90		
11	309	129.14	1.22	FAF47	4	1.18	3975	1182	1.02		
13	249	104.33	1.51	F 47	4	1.35	3471	1032	1.16		
16	212	88.65	1.77	FF 47	4	1.5	3050	907	1.33	FA 97R57	4
18	189	79.15	2.0			1.7	2677	796	1.5	FAF97R57	4
21	162	67.61	2.3			2.0	2354	700	1.7	F 97R57	4
21	155	64.89	2.4			2.3	2055	611	2.0	FF 97R57	4
						2.6	1796	534	2.3		
16	207	86.53	0.91	FA 37	4	2.9	1587	472	2.5		
17	193	80.65	0.98	FAF37	4	3.4	1379	410	2.9		
20	168	70.50	1.12	F 37	4	3.8	1234	367	3.3		
21	158	66.09	1.19	FF 37	4						
24	139	58.32	1.35			1.6	2983	887	0.95		
25	130	54.54	1.44			1.8	2623	780	1.08	FA 87R57	4
27	124	51.70	1.52			2.1	2267	674	1.24	FAF87R57	4
30	112	47.02	1.67			2.3	2048	609	1.38	F 87R57	4
						2.7	1732	515	1.63	FF 87R57	4
						3.1	1520	452	1.86		
						4.0	1160	345	2.4		



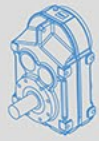


输出转速 Output speed r/min	输出扭矩 Output torque Nm	传动比 Ratio i	使用系数 Service factor f _B	机型号 Type Type	极数 Pole p	输出转速 Output speed r/min	输出扭矩 Output torque Nm	传动比 Ratio i	使用系数 Service factor f _B	机型号 Type Type	极数 Pole p
0.55kW						0.55kW					
2.6	1766	525	0.80	FA 77R37	4	21	230	64.89	1.63	FA 47	4
3.0	1577	469	0.89	FAF77R37	4	25	199	56.09	1.89	FAF47	4
3.4	1386	412	1.02	F 77R37	4	29	169	47.66	2.2	F 47	4
3.9	1201	357	1.17	FF 77R37	4	33	151	42.55	2.5	FF 47	4
4.4	1056	314	1.34								
5.4	864	257	0.89	FA 67R37	4	24	207	58.32	0.91		
6.3	740	220	1.04	FAF67R37	4	25	194	54.54	0.97		
7.1	659	196	1.17	F 67R37	4	27	184	51.70	1.02		
8.3	562	167	1.37	FF 67R37	4	30	167	47.02	1.13		
						32	156	43.83	1.21		
						36	136	38.31	1.38		
2.4	2039	276.64	1.98	FA 97	8	39	128	35.91	1.47		
2.6	1878	254.79	2.2	FAF97	8	44	113	31.69	1.67		
3.0	1668	226.34	2.4	F 97	8	49	100	28.09	1.88		
						58	85	23.88	2.2		
						59	84	23.63	2.2		
2.5	2004	271.92	1.41	FA 87	8	68	73	20.57	2.6	FA 37	4
2.6	1875	254.93	1.50	FAF87	8	72	68	19.27	2.7	FAF37	4
2.9	1684	228.57	1.67	F 87	8	82	60	17.03	3.1	F 37	4
3.4	1450	196.85	1.94	FF 87	8	97	51	14.33	3.7	FF 37	4
						108	46	12.87	4.1		
3.3	1517	271.92	1.86	FA 87	6	125	39	11.08	4.5		
3.5	1422	254.93	1.98	FAF87	6	133	37	10.42	4.7		
3.9	1275	228.57	2.2	F 87	6	155	32	8.97	5.1		
4.5	1098	196.85	2.6	FF 87	6	174	28	8.01	5.2		
4.9	998	178.95	2.8			185	27	7.51	5.4		
						204	24	6.81	5.6		
3.9	1260	225.79	1.12	FA 77	6	227	22	6.11	5.8		
4.5	1106	198.31	1.27	FAF77	6	264	19	5.27	6.3		
4.7	1051	188.40	1.34	F 77	6	281	18	4.95	6.4		
5.3	929	166.47	1.52	FF 77	6	326	15	4.26	6.8		
6.2	794	142.27	1.78			365	14	3.81	7.3		
6.8	728	130.42	1.94								
6.2	802	225.79	1.76			0.75kW					
7.0	704	198.31	2.0			0.50	12731	2776	1.33	FA 157R97	4
7.4	669	188.40	2.1	FA 77	4	0.57	11130	2427	1.52	FAF157R97	4
8.3	591	166.47	2.4	FAF77	4	0.83	7677	1674	2.2	F 157R97	4
9.8	505	142.27	2.8	F 77	4	1.1	5999	1308	2.8	FF 157R97	4
11	463	130.42	3.0	FF 77	4	1.2	5361	1169	3.2		
12	407	114.45	3.5								
13	385	108.46	3.7			0.47	13699	2987	0.82		
15	337	94.93	4.2			0.52	12350	2693	0.91	FA 127R77	4
						0.59	10896	2376	1.04	FAF127R77	4
7.1	694	195.39	1.11			0.68	9420	2054	1.20	F 127R77	4
8.1	607	170.85	1.27			0.77	8246	1798	1.37	FF 127R77	4
8.6	577	162.31	1.34	FA 67	4	0.86	7425	1619	1.52		
9.8	506	142.40	1.52	FAF67	4						
12	429	120.79	1.80	F 67	4	0.76	8374	1826	0.88		
13	387	109.04	2.0	FF 67	4	0.88	7241	1597	1.02		
14	341	95.94	2.3			0.99	6425	1401	1.15		
15	322	90.59	2.4			1.1	5700	1243	1.29	FA 107R77	4
18	277	77.97	2.8			1.3	4985	1087	1.48	FAF107R77	4
						1.5	4357	950	1.69	F 107R77	4
8.8	558	157.09	1.01			1.7	3825	834	1.93	FF 107R77	4
10	484	136.16	1.17			2.2	2875	627	2.6		
11	452	127.27	1.25	FA 57	4	3.3	1958	427	3.8		
13	391	110.01	1.44	FAF57	4						
15	332	93.47	1.70	F 57	4	1.3	4733	1032	0.85		
17	296	83.46	1.90	FF 57	4	1.5	4160	907	0.97		
19	260	73.16	2.2			1.7	3651	796	1.1	FA 97R57	4
20	243	68.38	2.3			2.0	3210	700	1.3	FAF97R57	4
24	210	59.10	2.7			2.3	2802	611	1.4	F 97R57	4
						2.6	2449	534	1.7	FF 97R57	4
13	371	104.33	1.01	FA 47	4	2.9	2165	472	1.9		
16	315	88.65	1.19	FAF47	4	3.4	1880	410	2.1		
18	281	79.15	1.34	F 47	4	3.8	1683	367	2.4		
21	240	67.61	1.57	FF 47	4						



输出转速 Output speed r/min	输出扭矩 Output torque Nm	传动比 Ratio i	使用系数 Service factor f _B	机型号 Type Type	极数 Pole p	输出转速 Output speed r/min	输出扭矩 Output torque Nm	传动比 Ratio i	使用系数 Service factor f _B	机型号 Type Type	极数 Pole p
0.75kW						0.75kW					
2.1	3091	674	0.91	FA 87R57	4	19	354	73.16	1.59	FA 57	4
2.3	2793	609	1.01	FAF87R57	4	20	331	68.38	1.70	FAF57	4
2.7	2362	515	1.19	F 87R57	4	24	286	59.10	1.97	F 57	4
3.1	2073	452	1.36	FF 87R57	4	28	243	50.22	2.3	FF 57	4
4.0	1582	345	1.78			31	217	44.84	2.6		
3.9	1637	357	0.86	FA 77R37	4	17	386	79.72	0.97		
4.4	1440	314	0.98	FAF77R37	4	20	330	68.09	1.14		
5.1	1247	272	1.13	F 77R37	4	21	317	65.36	1.19	FA 47	4
				FF 77R37	4	25	272	56.09	1.38	FAF47	4
						29	231	47.66	1.63	F 47	4
				FA 107	8	33	206	42.55	1.82	FF 47	4
				FAF107	8	38	176	36.34	2.1		
2.7	2519	255.25	2.9	F 107	8	41	165	34.04	2.3		
				FF 107	8	48	139	28.67	2.7		
2.5	2739	276.64	1.5	FA 97	8	30	228	47.02	0.83		
2.7	2523	254.79	1.6	FAF97	8	32	212	43.83	0.89		
3.0	2241	226.34	1.8	F 97	8	36	186	38.31	1.01		
				FF 97	8	39	174	35.91	1.08		
						44	153	31.69	1.22		
3.3	2047	276.64	2.0	FA 97	6	49	136	28.09	1.38		
3.6	1885	254.79	2.1	FAF97	6	58	116	23.88	1.63		
4.0	1675	226.34	2.4	F 97	6	59	114	23.63	1.6		
				FF 97	6	68	100	20.57	1.9		
						72	93	19.27	2.0	FA 37	4
3.3	2012	271.92	1.40	FA 87	6	82	82	17.03	2.3	FAF37	4
3.6	1886	254.93	1.50	FAF87	6	97	69	14.33	2.7	F 37	4
4.0	1691	228.57	1.67	F 87	6	108	62	12.87	3.0	FF 37	4
4.6	1456	196.85	1.94	FF 87	6	125	54	11.08	3.3		
5.1	1324	178.95	2.1			133	50	10.42	3.4		
5.7	1181	159.61	2.4			155	43	8.97	3.8		
				FA 87	4	204	33	6.81	4.0		
				FAF87	4	227	30	6.11	4.3		
5.1	1317	271.92	2.1	F 87	4	264	26	5.27	4.6		
5.4	1235	254.93	2.3	FF 87	4	281	24	4.95	4.7		
6.1	1107	228.57	2.5			326	21	4.26	5.0		
						365	18	3.81	5.3		
4.6	1467	198.31	0.96	FA 77	6	1.1kW					
4.8	1394	188.40	1.01	FAF77	6	0.50	18539	2776	0.91		
5.5	1232	166.47	1.14	F 77	6	0.58	16208	2427	1.04		
6.4	1053	142.27	1.34	FF 77	6	0.64	14592	2185	1.16		
7.0	965	130.42	1.46			0.72	12982	1944	1.30	FA 157R97	4
						0.84	11179	1674	1.51	FAF157R97	4
6.2	1094	225.79	1.29	FA 77	4	1.1	8735	1308	1.94	F 157R97	4
7.0	961	198.31	1.47	FAF77	4	1.2	7807	1169	2.2	FF 157R97	4
7.4	913	188.40	1.55	F 77	4	1.5	6364	953	2.7		
8.3	806	166.47	1.75	FF 77	4	1.7	5643	845	3.0		
9.8	689	142.27	2.0			3.1	2978	446	5.7		
11	632	130.42	2.2			4.7	2010	301	8.4		
12	554	114.45	2.5								
13	525	108.46	2.7								
						0.68	13717	2054	0.82		
8.1	828	170.85	0.93	FA 67	4	0.78	12007	1798	0.94	FA 127R77	4
8.6	786	162.31	0.98	FAF67	4	0.86	10812	1619	1.04	FAF127R77	4
9.8	690	142.40	1.12	F 67	4	1.0	9356	1401	1.21	F 127R77	4
12	585	120.79	1.32	FF 67	4	1.1	8214	1230	1.37	FF 127R77	4
13	528	109.04	1.46			1.3	7246	1085	1.56		
14	465	95.94	1.66								
15	439	90.59	1.76			1.1	8301	1243	0.89		
18	378	77.97	2.0			1.3	7259	1087	1.02	FA 107R77	4
21	320	66.13	2.4			1.5	6344	950	1.16	FAF107R77	4
23	289	59.70	2.7			1.7	5570	834	1.32	F 107R77	4
						1.9	4915	736	1.50	FF 107R77	4
11	616	127.27	0.91	FA 57	4	2.2	4274	640	1.72		
13	533	110.01	1.06	FAF57	4						
15	453	93.47	1.25	F 57	4						
17	404	83.46	1.40	FF 57	4						





输出转速 Output speed r/min	输出扭矩 Output torque Nm	传动比 Ratio i	使用系数 Service factor f _B	机型号 Type Type	极数 Pole p	输出转速 Output speed r/min	输出扭矩 Output torque Nm	传动比 Ratio i	使用系数 Service factor f _B	机型号 Type Type	极数 Pole p
1.1kW						1.1kW					
2.0	4675	700	0.86			17	589	83.46	0.96		
2.3	4080	611	0.99	FA 97R57	4	19	516	73.16	1.09		
2.6	3566	534	1.13	FAF97R57	4	20	482	68.38	1.17	FA 57	4
3.0	3152	472	1.28	F 97R57	4	24	417	59.10	1.35	FAF57	4
3.4	2738	410	1.48	FF 97R57	4	28	354	50.22	1.59	F 57	4
3.8	2451	367	1.65			31	316	44.84	1.78	FF 57	4
3.1	3019	452	0.93	FA 87R57	4	37	270	38.30	2.1		
4.1	2304	345	1.22	FAF87R57	4	39	253	35.87	2.2		
4.7	2003	300	1.41	F 87R57	4	46	213	30.22	2.6		
5.6	1663	249	1.70	FF 87R57	4	25	396	56.09	0.95		
2.7	3707	255.25	1.95	FA 107	8	29	336	47.66	1.12		
3.2	3123	215.04	2.3	FAF107	8	33	300	42.55	1.25		
3.4	2894	199.31	2.5	F 107	8	39	256	36.34	1.47	FA 47	4
3.8	2594	178.64	2.8	FF 107	8	41	240	34.04	1.57	FAF47	4
3.3	3002	276.64	1.35	FA 97	6	46	216	30.64	1.74	F 47	4
3.6	2765	254.79	1.46	FAF97	6	48	205	29.11	1.83	FF 47	4
4.0	2456	226.34	1.65	F 97	6	49	202	28.67	1.86		
4.8	2045	188.50	2.0	FF 97	6	55	180	25.54	2.1		
5.2	1908	175.83	2.1			65	153	21.66	2.5		
5.1	1951	276.64	2.1	FA 97	4	72	138	19.56	2.7		
5.5	1797	254.79	2.2	FAF97	4	44	224	31.69	0.84		
6.2	1596	226.34	2.5	F 97	4	50	198	28.09	0.95		
3.3	2951	271.92	0.96	FA 87	6	59	168	23.88	1.12		
3.6	2766	254.93	1.02	FAF87	6	68	145	20.57	1.30		
4.0	2480	228.57	1.14	F 87	6	73	136	19.27	1.38		
4.6	2136	196.85	1.32	FF 87	6	82	120	17.03	1.57		
5.1	1942	178.95	1.45			98	101	14.33	1.86		
5.7	1732	159.61	1.63			109	91	12.87	2.1	FA 37	4
5.2	1911	271.92	1.48	FA 87	4	126	78	11.08	2.3	FAF37	4
5.5	1798	254.93	1.57	FAF87	4	134	73	10.42	2.4	F 37	4
6.1	1612	228.57	1.75	F 87	4	156	63	8.97	2.6	FF 37	4
7.1	1388	196.85	2.0	FF 87	4	175	56	8.01	2.7		
7.8	1262	178.95	2.2			206	48	6.81	2.8		
8.8	1126	159.61	2.5			229	43	6.11	2.9		
10	946	134.16	3.0			266	37	5.27	3.2		
11	870	123.29	3.2			283	35	4.95	3.2		
7.1	1399	198.31	1.01	FA 77	4	329	30	4.26	3.4		
7.4	1329	188.40	1.06	FAF77	4	367	27	3.81	3.7		
8.4	1174	166.47	1.20	F 77	4	1.5kW					
9.8	1003	142.27	1.41	FF 77	4	0.58	22102	2427	0.77		
11	920	130.42	1.53			0.64	19898	2185	0.85		
12	807	114.45	1.75			0.72	17703	1944	0.96		
13	765	108.46	1.84			0.84	15244	1674	1.11	FA 157R97	4
15	670	94.93	2.1			1.1	11911	1308	1.42	FAF157R97	4
16	603	85.52	2.3			1.2	10646	1169	1.59	F 157R97	4
19	529	75.02	2.7			1.5	8679	953	1.95	FF 157R97	4
12	853	120.79	0.9	FA 67	4	1.7	7695	845	2.2		
13	769	109.04	1.0	FAF67	4	3.1	4062	446	4.2		
15	677	95.94	1.1	F 67	4	4.7	2741	301	6.2		
16	639	90.59	1.2	FF 67	4	0.86	14744	1619	0.77		
18	550	77.97	1.4			1.0	12758	1401	0.88	FA 127R77	4
21	466	66.13	1.7			1.1	11201	1230	1.01	FAF127R77	4
23	421	59.70	1.8			1.3	9881	1085	1.14	F 127R77	4
27	371	52.53	2.1			1.5	8533	937	1.32	FF 127R77	4
28	350	49.60	2.2			1.7	7531	827	1.50		
33	298	42.23	2.6			1.9	6675	733	1.69		
36	271	38.38	2.7			2.2	5828	640	1.94		
42	234	33.24	3.0			1.5	8651	950	0.83	FA 107R77	4
						1.7	7595	834	0.95	FAF107R77	4
						1.9	6702	736	1.08	F 107R77	4
						2.2	5710	627	1.26	FF 107R77	4

F



输出转速 Output speed r/min	输出扭矩 Output torque Nm	传动比 Ratio i	使用系数 Service factor f _B	机型号 Type Type	极数 Pole p	输出转速 Output speed r/min	输出扭矩 Output torque Nm	传动比 Ratio i	使用系数 Service factor f _B	机型号 Type Type	极数 Pole p
1.5kW						1.5kW					
2.5	5100	560	1.42	FA 107R77	4	15	871	90.59	0.88		
2.9	4453	489	1.62	FAF107R77	4	18	750	77.97	1.03		
3.3	3889	427	1.86	F 107R77	4	21	636	66.13	1.21		
3.8	3369	370	2.1	FF 107R77	4	23	574	59.70	1.34		
2.6	4863	534	0.83	FA 97R57	4	27	505	52.53	1.53	FA 67	4
3.0	4298	472	0.94	FAF97R57	4	28	477	49.60	1.62	FAF67	4
3.4	3734	410	1.08	F 97R57	4	33	406	42.23	1.90	F 67	4
3.8	3342	367	1.21	FF 97R57	4	36	369	38.38	1.99	FF 67	4
4.1	3142	345	0.90	FA 87R57	4	39	349	36.30	2.2		
4.7	2732	300	1.03	FAF87R57	4	44	309	32.08	2.5		
5.6	2268	249	1.24	F 87R57	4	51	264	27.41	2.9		
				FF 87R57	4	56	242	25.13	3.2		
2.7	4981	255.25	1.48	FA 107	8	24	568	59.10	0.99		
3.2	4197	215.04	1.76	FAF107	8	28	483	50.22	1.17	FA 57	4
3.5	3890	199.31	1.89	F 107	8	31	431	44.84	1.31	FAF57	4
3.9	3486	178.64	2.1	FF 107	8	37	368	38.30	1.53	F 57	4
						39	345	35.87	1.63	FF 57	4
						46	291	30.22	1.94		
3.6	3736	255.25	2.0	FA 107	6	33	409	42.55	0.92		
4.3	3147	215.04	2.3	FAF107	6	39	350	36.34	1.08		
4.6	2917	199.31	2.5	F 107	6	41	327	34.04	1.15		
5.2	2615	178.64	2.8	FF 107	6	46	295	30.64	1.28		
3.3	4049	276.64	1.00	FA 97	6	48	280	29.11	1.34	FA 47	4
3.6	3729	254.79	1.08	FAF97	6	49	276	28.67	1.36	FAF47	4
4.1	3313	226.34	1.22	F 97	6	55	246	25.54	1.53	F 47	4
4.9	2759	188.50	1.47	FF 97	6	65	208	21.66	1.80	FF 47	4
5.2	2574	178.83	1.57			72	188	19.56	2.0		
5.1	2661	276.64	1.52	FA 97	4	81	166	17.21	2.3		
5.5	2451	254.79	1.65	FAF97	4	86	156	16.25	2.4		
6.2	2177	226.34	1.86	F 97	4	101	133	13.83	2.8		
7.4	1813	188.50	2.2	FF 97	4						
8.0	1691	178.83	2.4			68	198	20.57	0.95		
5.2	2615	271.92	1.08			73	185	19.27	1.01		
5.5	2452	254.93	1.15			82	164	17.03	1.15		
6.1	2198	228.57	1.28	FA 87	4	98	138	14.33	1.36		
7.1	1893	196.85	1.49	FAF87	4	109	124	12.87	1.52		
7.8	1721	178.95	1.63	F 87	4	126	107	11.08	1.68	FA 37	4
8.8	1535	159.61	1.84	FF 87	4	134	100	10.42	1.74	FAF37	4
10	1290	134.16	2.2			156	86	8.97	1.91	F 37	4
13	1053	109.49	2.7			175	77	8.01	2.1	FF 37	4
14	942	97.89	3.0			206	66	6.81	2.0		
						229	59	6.11	2.2		
						266	51	5.27	2.3		
						283	48	4.95	2.4		
						329	41	4.26	2.5		
						367	37	3.81	2.7		
8.4	1601	166.47	0.88			2.2kW					
9.8	1368	142.27	1.03			1.00	18699	1420	0.90		
11	1254	130.42	1.12			1.09	17224	1308	0.98		
12	1101	114.45	1.28			1.21	15394	1169	1.10		
13	1043	108.46	1.35			1.49	12549	953	1.35		
15	913	94.93	1.54			1.68	11127	845	1.52		
16	823	85.52	1.71	FA 77	4	1.86	10061	764	1.68	FA 157R97	4
19	722	75.02	1.95	FAF77	4	2.1	8954	680	1.89	FAF157R97	4
19	695	72.29	2.0	F 77	4	2.5	7585	576	2.2	F 157R97	4
21	637	66.28	2.2	FF 77	4	3.2	5873	446	2.9	FF 157R97	4
24	559	58.16	2.5			4.7	3964	301	4.3		
25	530	55.12	2.7			5.2	3582	272	4.7		
29	464	48.24	3.0			6.1	3042	231	5.6		
32	418	43.46	3.0			7.2	2581	196	6.6		
37	367	38.12	3.4								
38	352	36.52	3.8			1.31	14288	1085	0.79	FA 127R77	4
44	303	31.45	4.3			1.52	12339	937	0.91	FAF127R77	4
						1.72	10890	827	1.04	F 127R77	4
						1.94	9652	733	1.17	FF 127R77	4

F



输出转速 Output speed r/min	输出扭矩 Output torque Nm	传动比 Ratio i	使用系数 Service factor f _B	机型号 Type Type	极数 Pole p	输出转速 Output speed r/min	输出扭矩 Output torque Nm	传动比 Ratio i	使用系数 Service factor f _B	机型号 Type Type	极数 Pole p
4kW						5.5kW					
8.2	4385	175.83	0.92			2.5	18699	576	0.90		
9.2	3919	157.16	1.03			2.9	16329	503	1.04		
10	3528	141.47	1.15			3.2	14479	446	1.17	FA 157R97	4
11	3195	128.12	1.27			4.1	11460	353	1.48	FAF157R97	4
13	2833	113.61	1.43	FA 97	4	4.8	9771	301	1.73	F 157R97	4
14	2561	102.72	1.58	FAF97	4	5.3	8830	272	1.92	FF 157R97	4
15	2427	97.31	1.67	F 97	4	6.2	7499	231	2.3		
16	2263	90.77	1.79	FF 97	4	7.1	6558	202	2.6		
18	2023	81.13	2.0			7.3	6363	196	2.7		
20	1821	73.03	2.2								
22	1649	66.14	2.5			3.5	13537	417	0.83		
						3.9	12109	373	0.93	FA 127R87	4
13	2730	109.49	1.03			4.6	10129	312	1.11	FAF127R87	4
15	2441	97.89	1.16			4.9	9512	293	1.19	F 127R87	4
16	2195	88.01	1.28	FA 87	4	5.5	8505	262	1.33	FF 127R87	4
19	1905	76.39	1.48	FAF87	4	6.4	7337	226	1.54		
21	1706	68.40	1.65	F 87	4						
25	1415	56.75	1.99	FF 87	4	3.4	13732	423	0.82	FA 127R77	4
29	1254	50.29	2.2			3.9	12044	371	0.94	FAF127R77	4
32	1128	45.22	2.5							F 127R77	4
										FF 127R77	4
22	1653	66.28	0.85			2.7	18293	266.76	0.92		
25	1450	58.16	0.97			3.3	14977	218.40	1.1		
26	1374	55.12	1.03			4.0	12149	177.17	1.4		
30	1203	48.24	1.17			4.4	11269	164.33	1.5	FA 157	8
33	1084	43.46	1.30			5.1	9724	141.80	1.7	FAF157	8
38	951	38.12	1.48	FA 77	4	5.8	8581	125.14	2.0	F 157	8
43	839	33.64	1.68	FAF77	4	6.6	7440	108.49	2.3	FF 157	8
48	744	29.82	1.90	F 77	4	7.5	6619	96.53	2.6		
50	717	28.59	1.97	FF 77	4	8.3	5959	86.90	2.8		
56	636	25.50	2.2			9.1	5450	79.47	3.1		
57	635	25.47	2.2			10	4742	69.15	3.6		
67	534	21.43	2.6			4.2	11817	172.33	0.95	FA 127	8
73	491	19.70	2.9			4.7	10616	154.81	1.06	FAF127	8
						5.7	8620	125.71	1.31	F 127	8
53	683	27.41	1.13			6.2	7555	116.00	1.42	FF 127	8
57	627	25.13	1.23								
65	550	22.05	1.40			6.7	7373	215.04	0.98		
69	521	20.90	1.48			7.2	6834	199.31	1.06	FA 107	4
79	456	18.29	1.69			8.1	6125	178.64	1.18	FAF107	4
87	411	16.48	1.88			8.9	5530	161.28	1.31	F 107	4
100	361	14.46	2.1	FA 67	4	9.8	5023	146.49	1.44	FF 107	4
113	318	12.76	2.4	FAF67	4	11	4456	129.97	1.62		
127	282	11.31	2.7	F 67	4						
149	241	9.66	3.2	FF 67	4	12	4044	117.94	1.79		
150	240	9.61	2.1			14	3476	101.38	2.1	FA 107	4
158	227	9.11	2.4			16	3171	92.47	2.3	FAF107	4
181	199	7.97	2.9			16	3034	88.49	2.4	F 107	4
201	179	7.18	3.3			17	2880	83.99	2.5	FF 107	4
229	157	6.30	3.6								
259	139	5.56	4.0			11	4393	128.12	0.92		
292	123	4.93	4.3			13	3895	113.61	1.04		
342	105	4.21	4.5			14	3522	102.72	1.15		
						15	3336	97.31	1.21		
68	528	21.17	1.07			16	3112	90.77	1.30	FA 97	4
75	477	19.11	1.18			17	2985	87.06	1.35	FAF97	4
86	419	16.81	1.35			18	2782	81.13	1.45	F 97	4
91	396	15.88	1.42			19	2620	76.40	1.54	FF 97	4
107	337	13.52	1.67			21	2504	73.03	1.68		
117	306	12.29	1.84	FA 57	4	22	2268	66.14	1.78		
135	265	10.64	2.1	FAF57	4	25	2011	58.65	2.0		
155	232	9.31	1.70	F 57	4	27	1818	53.03	2.2		
176	204	8.19	1.93	FF 57	4						
186	193	7.73	2.0			16	3018	88.01	0.93	FA 87	4
219	164	6.58	2.4			19	2619	76.39	1.08	FAF87	4
241	149	5.98	2.6			21	2345	68.40	1.20	F 87	4
278	129	5.18	3.0			25	1946	56.75	1.45	FF 87	4

F



输出转速 Output speed r/min	输出扭矩 Output torque Nm	传动比 Ratio i	使用系数 Service factor f _B	机型号 Type Type	极数 Pole p	输出转速 Output speed r/min	输出扭矩 Output torque Nm	传动比 Ratio i	使用系数 Service factor f _B	机型号 Type Type	极数 Pole p
5.5kW						7.5kW					
29	1724	50.29	1.64			8.4	8023	85.80	2.1		
32	1550	45.22	1.82			9.2	7337	78.46	2.3	FA 157	8
37	1346	39.25	2.1	FA 87	4	10.5	6385	68.28	2.7	FAF157	8
41	1205	35.14	2.3	FAF87	4	12	5634	60.25	3.0	F 157	8
49	1000	29.16	2.8	F 87	4	13.8	4885	52.24	3.5	FF 157	8
42	1170	34.11	2.1	FF 87	4	15.5	4346	46.48	3.9		
51	974	28.41	2.4			18	3746	40.06	4.5		
54	909	26.50	3.1								
61	812	23.68	3.5			3.6	18709	266.76	0.90		
						4.4	15317	218.40	1.11		
30	1654	48.24	0.85			5.4	12425	177.17	1.36		
33	1490	43.46	0.95			5.8	11525	164.33	1.47		
38	1307	38.12	1.08			6.8	9945	141.80	1.70	FA 157	6
43	1153	33.64	1.22			7.7	8776	125.14	1.93	FAF157	6
48	1022	29.82	1.38	FA 77	4	8.8	7609	108.49	2.2	F 157	6
56	874	25.50	1.61	FAF77	4	9.9	6770	96.53	2.5	FF 157	6
57	873	25.47	1.61	F 77	4	11	6095	86.90	2.8		
67	735	21.43	1.92	FF 77	4	12	5573	79.47	3.0		
73	675	19.70	2.1			14	4850	69.15	3.5		
82	600	17.49	2.4			16	4280	61.02	4.0		
92	536	15.64	2.6			18	3711	52.91	4.6		
102	482	14.06	2.9								
118	418	12.20	3.4			5.7	11816	126.36	0.95	FA 127	8
						6.2	10776	115.24	1.05	FAF127	8
65	756	22.05	1.02			7.2	9326	99.73	1.21	F 127	8
69	717	20.9	1.08			8.2	8229	88.00	1.37	FF 127	8
79	627	18.29	1.23								
87	565	16.48	1.36			5.6	12086	172.33	0.93	FA 127	6
100	496	14.46	1.50			6.2	10857	154.81	1.04	FAF127	6
113	438	12.76	1.55	FA 67	4	7.6	8816	125.71	1.28	F 127	6
127	388	11.31	1.70	FAF67	4	8.3	8135	116.00	1.39	FF 127	6
149	331	9.66	1.76	F 67	4						
150	329	9.61	2.0	FF 67	4	8.5	7947	172.33	1.42	FA 127	4
158	312	9.11	2.1			9.4	7139	154.81	1.58	FAF127	4
181	273	7.97	2.3			12	5797	125.71	1.95	F 127	4
201	246	7.18	2.4								
229	216	6.30	2.7			8.2	8238	178.64	0.88		
259	191	5.56	2.9			9.1	7437	161.28	0.97		
292	169	4.93	3.1			10	6755	146.49	1.07		
342	144	4.21	3.3			11	5994	129.97	1.20		
						12	5439	117.94	1.33	FA 107	4
86	576	16.81	0.98			14	4675	101.38	1.54	FAF107	4
91	544	15.88	1.04			16	4264	92.47	1.69	F 107	4
107	464	13.52	1.22			16	4081	88.49	1.77	FF 107	4
117	421	12.29	1.34	FA 57	4	17	3873	83.99	1.86		
135	365	10.64	1.55	FAF57	4	20	3436	74.52	2.1		
176	281	8.19	1.41	F 57	4	22	3118	67.62	2.3		
186	265	7.73	1.49	FF 57	4						
219	226	6.58	1.75			15	4487	97.31	0.90		
241	205	5.98	1.93			16	4186	90.77	0.97		
278	178	5.18	2.2			17	4015	87.06	1.01		
						18	3741	81.13	1.08		
						19	3523	76.40	1.15		
7.5kW						21	3229	70.03	1.25	FA 97	4
4.6	13812	312	0.82	FA 127R87	4	22	3050	66.14	1.33	FAF97	4
4.9	12971	293	0.87	FAF127R87	4	25	2705	58.65	1.49	F 97	4
5.5	11598	262	0.97	F 127R87	4	28	2445	53.03	1.65	FF 97	4
6.4	10005	226	1.13	FF 127R87	4	32	2072	44.94	1.95		
7.2	8854	200	1.27			33	2023	43.87	2.0		
						37	1810	39.26	2.2		
3.3	20350	217.62	0.83			40	1704	36.96	2.4		
4.0	16664	178.20	1.02			43	1580	34.26	2.6		
4.4	15238	162.96	1.11	FA 157	8	44	1514	32.83	2.7		
5.1	13260	141.80	1.28	FAF157	8	48	1416	30.70	2.9		
5.8	11702	125.14	1.45	F 157	8						
6.6	10145	108.49	1.67	FF 157	8						
7.5	9027	96.53	1.87								

F

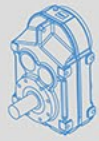


输出转速 Output speed r/min	输出扭矩 Output torque Nm	传动比 Ratio i	使用系数 Service factor f _B	机型号 Type Type	极数 Pole p	输出转速 Output speed r/min	输出扭矩 Output torque Nm	传动比 Ratio i	使用系数 Service factor f _B	机型号 Type Type	极数 Pole p
7.5kW						11kW					
26	2617	56.75	1.08			15	6529	96.53	2.6	FA 157	4
29	2319	50.29	1.19			17	5877	86.90	2.9	FAF157	4
32	2085	45.22	1.27			18	5375	79.47	3.1	F 157	4
37	1810	39.25	1.41			21	4677	69.15	3.6	FF 157	4
42	1620	35.14	1.51	FA 87	4	7.7	12864	125.71	0.88	FA 127	6
50	1345	29.16	1.75	FAF87	4	8.4	11732	116.00	0.96	FAF127	6
51	1327	28.41	1.74	F 87	4	10	10153	99.73	1.11	F 127	6
55	1222	26.50	2.3	FF 87	4	11	8958	88.00	1.26	FF 127	6
62	1092	23.68	2.6			13	7737	76.00	1.46		
68	983	21.32	2.9			8.5	11656	172.33	0.97		
76	890	19.31	3.2			9.4	10471	154.81	1.08	FA 127	4
85	789	17.12	3.6			12	8502	125.71	1.33	FAF127	4
94	714	15.48	4.0			13	7846	116.00	1.44	F 127	4
43	1551	33.64	0.91			15	6745	99.73	1.67	FF 127	4
49	1375	29.82	1.03			17	5952	88.00	1.90		
57	1176	25.50	1.16			19	5140	76.00	2.2		
57	1175	25.47	1.20			12	7977	117.94	0.91		
68	988	21.43	1.43			14	6857	101.38	1.05		
74	908	19.70	1.55			16	6254	92.47	1.15		
83	807	17.49	1.75	FA 77	4	17	5681	83.99	1.27		
93	721	15.64	1.95	FAF77	4	20	5040	74.52	1.43	FA 107	4
104	648	14.06	2.2	F 77	4	22	4573	67.62	1.58	FAF107	4
120	563	12.20	2.5	FF 77	4	25	3931	58.12	1.84	F 107	4
134	504	10.93	2.8			29	3431	50.73	2.1	FF 107	4
156	431	9.35	2.4			34	2910	43.03	2.5		
176	383	8.30	2.7			43	2285	33.78	3.2		
197	342	7.42	3.0			53	1855	27.43	3.9		
219	308	6.67	3.3			58	1712	25.31	4.2		
252	267	5.79	3.8			22	4473	66.14	0.90		
281	239	5.19	4.2			25	3967	58.65	1.02		
340	198	4.30	4.8			28	3587	53.03	1.13		
11kW						11kW					
4.9	19275	301	0.88	FA 157R97	4	32	3040	44.94	1.33	FA 97	4
5.4	17418	272	0.97	FAF157R97	4	37	2655	39.26	1.52	FAF97	4
6.3	14793	231	1.14	F 157R97	4	43	2317	34.26	1.74	F 97	4
7.2	12936	202	1.31	FF 157R97	4	44	2220	32.83	1.82	FF 97	4
7.4	12551	196	1.35			48	2076	30.70	1.95		
6.5	14472	226	0.78	FA 127R87	4	53	1875	27.72	2.2		
7.3	12807	200	0.88	FAF127R87	4	58	1703	25.18	2.4		
8.7	10758	168	1.05	F 127R87	4	65	1511	22.34	2.7		
				FF 127R87	4	37	2655	39.25	0.96		
5.1	19181	141.80	0.88	FA 157	8	42	2377	35.14	1.03		
5.8	16928	125.14	1.00	FAF157	8	50	1972	29.16	1.20		
6.7	14675	108.49	1.15	F 157	8	55	1792	26.50	1.57	FA 87	4
7.6	13058	96.53	1.30	FF 157	8	62	1602	23.68	1.76	FAF87	4
5.5	18036	177.17	0.94			68	1442	21.32	1.96	F 87	4
5.9	16729	164.33	1.01			76	1306	19.31	2.16	FF 87	4
6.8	14435	141.80	1.17	FA 157	6	85	1158	17.12	2.4		
7.8	12739	125.14	1.33	FAF157	6	94	1047	15.48	2.7		
8.9	11044	108.49	1.53	F 157	6	111	887	13.12	3.2		
10	9827	96.53	1.72	FF 157	6	74	1332	19.70	1.06		
11	8847	86.90	1.91			83	1183	17.49	1.19		
12	8090	79.47	2.1			93	1058	15.64	1.33		
5.5	18042	266.76	0.94			104	951	14.06	1.48		
6.7	14776	218.46	1.15			120	825	12.20	1.61	FA 77	4
8.2	12053	177.17	1.40	FA 157	4	134	739	10.93	1.71	FAF77	4
8.9	11114	164.33	1.52	FAF157	4	156	632	9.35	1.81	F 77	4
10	9591	141.80	1.76	F 157	4	176	561	8.30	1.91	FF 77	4
12	8464	125.14	2.0	FF 157	4	197	502	7.42	2.0		
13	7338	108.49	2.3			219	451	6.67	2.3		
						252	392	5.79	2.6		
						281	351	5.19	2.9		
						340	291	4.30	3.3		



输出转速 Output speed r/min	输出扭矩 Output torque Nm	传动比 Ratio i	使用系数 Service factor f _B	机型号 Type Type	极数 Pole p	输出转速 Output speed r/min	输出扭矩 Output torque Nm	传动比 Ratio i	使用系数 Service factor f _B	机型号 Type Type	极数 Pole p
15kW						15kW					
6.3	20172	231	0.84	FA 157R97	4	55	2444	26.50	1.15		
7.2	17639	202	0.96	FAF157R97	4	62	2184	23.68	1.29		
7.4	17115	196	0.99	F 157R97	4	68	1966	21.32	1.43		
				FF 157R97	4	76	1781	19.31	1.58		
6.8	19685	141.80	0.86	FA 157	6	85	1579	17.12	1.79		
7.8	17372	125.14	0.97	FAF157	6	94	1428	15.48	1.84	FA 87	4
8.9	15061	108.49	1.12	F 157	6	111	1210	13.12	1.98	FAF87	4
10	13400	96.53	1.26	FF 157	6	127	1057	11.46	2.1	F 87	4
11	12063	86.90	1.40			152	884	9.58	2.3	FF 87	4
						173	780	8.46	2.5		
6.7	20143	218.40	0.84			195	692	7.50	2.7		
8.2	16340	177.17	1.04			215	625	6.78	2.8		
8.9	15156	164.33	1.12			254	530	5.75	2.8		
10	13078	141.80	1.29	FA 157	4	291	463	5.02	3.1		
12	11542	125.14	1.47	FAF157	4	348	387	4.20	3.5		
13	10006	108.49	1.69	F 157	4	18.5kW					
15	8903	96.53	1.90	FF 157	4	7.3	21607	202	0.78	FA 157R97	4
17	8015	86.90	2.1			7.5	20965	196	0.81	FAF157R97	4
18	7329	79.47	2.3							F 157R97	4
21	6378	69.15	2.7							FF 157R97	4
24	5628	61.02	3.0								
9.7	13844	99.73	0.81	FA 127	6	8.3	20016	177.17	0.85		
11	12216	88.00	0.92	FAF127	6	8.9	18565	164.33	0.91		
13	10550	76.00	1.07	F 127	6	10	16020	141.80	1.06		
14	9803	70.62	1.15	FF 127	6	12	14138	125.14	1.20	FA 157	4
15	8941	64.41	1.26			14	12257	108.49	1.38	FAF157	4
						15	10906	96.53	1.55	F 157	4
12	11594	125.71	0.97	FA 127	4	17	9818	86.90	1.72	FF 157	4
13	10699	116.00	1.05	FAF127	4	18	8978	79.47	1.88		
15	9198	99.73	1.23	F 127	4	21	7812	69.15	2.2		
17	8116	88.00	1.39	FF 127	4	24	6894	61.02	2.5		
19	7009	76.00	1.61			28	5978	52.91	2.8		
21	6513	70.62	1.73								
16	8528	92.47	0.85			13	13105	116.00	0.86		
16	8161	88.49	0.88			15	11267	99.73	1.00		
17	7746	83.99	0.93			17	9942	88.00	1.13	FA 127	4
20	6873	74.52	1.05			19	8586	76.00	1.31	FAF127	4
22	6237	67.62	1.16	FA 107	4	21	7978	70.62	1.41	F 127	4
25	5360	58.12	1.35	FAF107	4	23	7277	64.41	1.55	FF 127	4
29	4679	50.73	1.54	F 107	4	26	6297	55.74	1.79		
34	3969	43.03	1.82	FF 107	4	30	5557	49.19	2.0		
39	3469	37.61	2.1								
43	3116	33.78	2.3			20	8419	74.52	0.86		
46	2933	31.80	2.5			22	7639	67.62	0.94		
53	2530	27.43	2.8			25	6566	58.12	1.10		
58	2334	25.31	3.1			29	5731	50.73	1.26	FA 107	4
67	2007	21.76	3.6			34	4861	43.03	1.49	FAF107	4
						39	4249	37.61	1.70	F 107	4
32	4145	44.94	0.98			44	3817	33.78	1.89	FF 107	4
37	3621	39.26	1.12			46	3593	31.80	2.0		
43	3160	34.26	1.28			53	3099	27.43	2.3		
44	3028	32.83	1.33	FA 97	4	58	2859	25.31	2.5		
48	2831	30.70	1.43	FAF97	4	68	2458	21.76	2.9		
53	2557	27.72	1.58	F 97	4						
58	2322	25.18	1.74	FF 97	4	37	4435	39.26	0.91		
65	2060	22.34	1.96			45	3709	32.83	1.09		
72	1869	20.27	2.2			53	3132	27.72	1.29		
84	1607	17.42	2.5			58	2845	25.18	1.42	FA 97	4
96	1403	15.21	2.9			66	2524	22.34	1.60	FAF97	4
113	1190	12.90	3.4			73	2290	20.27	1.77	F 97	4
129	1040	11.28	3.9			84	1274	17.42	2.35	FF 97	4
						97	1718	15.21	2.77		
						114	1457	12.90	3.17		
						130	1274	11.28	3.17		





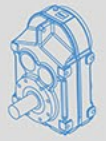
输出转速 Output speed r/min	输出扭矩 Output torque Nm	传动比 Ratio i	使用系数 Service factor f _B	机型号 Type Type	极数 Pole p	输出转速 Output speed r/min	输出扭矩 Output torque Nm	传动比 Ratio i	使用系数 Service factor f _B	机型号 Type Type	极数 Pole p
18.5kW						22kW					
69	2409	21.32	1.17			112	1763	13.12	1.27		
76	2182	19.31	1.29			128	1540	11.46	1.43		
86	1934	17.12	1.46			153	1287	9.58	1.58	FA 87	4
95	1749	15.48	1.50			174	1137	8.46	1.60	FAF87	4
112	1482	13.12	1.61	FA 87	4	196	1008	7.50	1.70	F 87	4
128	1295	11.46	1.70	FAF87	4	217	911	6.78	1.83	FF 87	4
153	1082	9.58	1.80	F 87	4	256	773	5.75	1.86		
174	956	8.46	1.88	FF 87	4	293	674	5.02	2.1		
196	847	7.50	1.90			350	564	4.20	2.4		
217	766	6.78	2.0			30kW					
256	650	5.75	2.2			14	19876	108.49	0.85		
296	567	5.02	2.5			15	17685	96.53	0.96		
350	474	4.20	2.9			17	15920	86.90	1.06		
22kW						18	14559	79.47	1.16	FA 157	4
10	19654	96.53	0.86	FA 157	6	21	12669	69.15	1.34	FAF157	4
11	17693	86.90	0.96	FAF157	6	24	11179	61.02	1.51	F 157	4
12	16180	79.47	1.05	F 157	6	28	9693	52.91	1.75	FF 157	4
14	14079	69.15	1.20	FF 157	6	31	8623	47.07	2.0		
10	19051	141.80	0.89			36	7433	40.57	2.3		
12	16813	125.14	1.01			19	13924	76.00	0.81		
14	14576	108.49	1.16			21	12938	70.62	0.87		
15	12969	96.53	1.30			23	11800	64.41	0.96		
17	11675	86.90	1.45	FA 157	4	26	10212	55.74	1.10		
18	10677	79.47	1.58	FAF157	4	30	9012	49.19	1.25	FA 127	4
21	9290	69.15	1.82	F 157	4	35	7783	42.48	1.45	FAF127	4
24	8198	61.02	2.1	FF 157	4	39	6883	37.57	1.58	F 127	4
28	7108	52.91	2.4			47	5786	31.58	1.6	FF 127	4
31	6324	47.07	2.7			54	4961	26.92	1.95		
36	5451	40.57	3.1			58	4672	25.50	2.4		
45	4430	32.97	3.8			59	4536	24.97	2.8		
15	13399	99.73	0.84			68	3948	21.55	2.9		
17	11823	88.00	0.95			77	3483	19.01	3.2		
19	10211	76.00	1.10	FA 127	4	34	7883	43.03	0.92		
21	9488	70.62	1.19	FAF127	4	39	6890	37.61	1.05		
23	8653	64.41	1.30	F 127	4	46	5826	31.80	1.24		
26	7489	55.74	1.51	FF 127	4	54	5025	27.43	1.44	FA 107	4
30	6609	49.19	1.71			58	4637	25.31	1.56	FAF107	4
35	5707	42.48	1.98			68	3987	21.76	1.81	F 107	4
25	7808	58.12	0.92			77	3518	19.20	2.1	FF 107	4
29	6816	50.73	1.06			89	3038	16.58	2.4		
34	5781	43.03	1.25			100	2688	14.67	2.7		
39	5053	37.61	1.43	FA 107	4	119	2259	12.33	2.9		
44	4540	33.78	1.59	FAF107	4	148	1825	9.96	3.3		
46	4272	31.08	1.69	F 107	4	66	4093	22.34	0.99		
54	3685	27.43	1.96	FF 107	4	73	3714	20.27	1.09		
58	3400	25.31	2.1			84	3191	17.42	1.27		
68	2923	21.76	2.5			97	2787	15.21	1.31		
77	2580	19.20	2.8			114	2363	12.90	1.44	FA 97	4
53	3724	27.72	1.09			130	2067	11.28	1.45	FAF97	4
58	3383	25.18	1.19			159	1698	9.27	1.67	F 97	4
66	3001	22.34	1.35	FA 97	4	175	1541	8.41	1.83	FF 97	4
73	2723	20.27	1.48	FAF97	4	203	1325	7.23	1.85		
84	2340	17.42	1.73	F 97	4	233	1156	6.31	1.86		
97	2043	15.21	2.0	FF 97	4	275	980	5.35	2.1		
114	1733	12.90	2.3			314	857	4.68	2.2		
130	1515	11.28	2.7								
69	2864	21.32	0.98	FA 87	4						
76	2594	19.31	1.09	FAF87	4						
86	2300	17.12	1.23	F 87	4						
95	2080	15.48	1.36	FF 87	4						

F



输出转速 Output speed r/min	输出扭矩 Output torque Nm	传动比 Ratio i	使用系数 Service factor f _B	机型号 Type Type	极数 Pole p	输出转速 Output speed r/min	输出扭矩 Output torque Nm	传动比 Ratio i	使用系数 Service factor f _B	机型号 Type Type	极数 Pole p
37kW						45kW					
17	19503	86.90	0.87			54	7525	27.57	0.98		
19	17835	79.47	0.95			59	6862	25.14	1.07		
21	15519	69.15	1.09	FA 157	4	68	5939	21.76	1.24		
24	13694	61.02	1.24	FAF157	4	77	5241	19.2	1.41		
28	11874	52.91	1.42	F 157	4	89	4525	16.58	1.63	FA 107	4
31	10564	47.07	1.60	FF 157	4	101	4004	14.67	1.80	FAF107	4
36	9105	40.57	1.86			120	3365	12.33	1.90	F 107	4
45	7399	32.97	2.3			149	2719	9.96	2.0	FF 107	4
53	6275	27.96	2.7			153	2634	9.65	2.1		
15	22261	99.19	0.51			177	2276	8.34	2.2		
27	12509	55.74	0.90			201	2012	7.37	2.3		
35	9534	42.48	1.18			239	1692	6.20	2.6		
39	8432	37.57	1.31			55kW					
47	7087	31.58	1.34			24	20357	61.02	0.83		
55	6077	26.92	1.86			28	17651	52.91	0.96		
60	5557	24.97	1.45	FA 127	4	31	15703	47.07	1.08	FA 157	4
69	4836	21.55	2.3	FAF127	4	36	13534	40.57	1.25	FAF157	4
78	4266	19.01	2.4	F 127	4	45	10999	32.97	1.54	F 157	4
90	3699	16.48	2.8	FF 127	4	53	9328	27.96	1.66	FF 157	4
101	3292	14.67	3.1			58	8484	25.43	1.81		
117	2837	12.64	3.2			67	7393	22.16	2.3		
144	2305	10.27	3.3			75	6595	19.77	2.4		
169	1966	8.76	3.3			88	5621	16.85	3.0		
190	1748	7.79	3.9			39	12534	37.57	0.90		
54	6156	27.43	1.20			47	10535	31.58	1.07		
58	5680	25.31	1.30			58	8507	25.5	1.33		
68	4883	21.76	1.51			69	7189	21.55	1.57		
77	4309	19.20	1.7			78	6342	19.01	1.63		
89	3721	16.58	2.0	FA 107	4	90	5498	16.48	1.88	FA 127	4
101	3292	14.67	2.1	FAF107	4	101	4894	14.67	2.1	FAF127	4
120	2767	12.33	2.2	F 107	4	117	4217	12.64	2.2	F 127	4
149	2235	9.96	2.3	FF 107	4	144	3426	10.27	2.3	FF 127	4
153	2166	9.65	2.4			169	2922	8.76	2.4		
177	1872	8.34	2.6			190	2599	7.79	2.6		
201	1654	7.37	2.7			220	2242	6.72	2.9		
239	1391	6.20	3.1			271	1821	5.46	3.1		
45kW						75kW					
21	18874	69.15	0.90			31	21413	47.07	0.79		
24	16655	61.02	1.02	FA 157	4	36	18456	40.57	0.92		
28	14442	52.91	1.17	FAF157	4	45	14999	32.97	1.13		
31	12848	47.07	1.32	F 157	4	53	12719	27.96	1.22	FA 157	4
36	11074	40.57	1.53	FF 157	4	58	11569	25.43	1.33	FAF157	4
45	8999	32.97	1.88			67	10081	22.16	1.68	F 157	4
53	7632	27.96	2.2			75	8994	19.77	1.78	FF 157	4
30	13426	49.19	0.84			88	7665	16.85	2.2		
35	11595	42.48	0.97			106	6351	13.96	2.5		
39	10255	37.57	1.08			124	5423	11.92	2.8		
47	8620	31.58	1.10			58	11600	25.50	0.97		
55	7391	26.92	1.18			69	9803	21.55	1.2		
58	6960	25.50	1.31			78	8648	19.01	1.2		
60	6758	24.97	1.62	FA 127	4	90	7497	16.48	1.4		
69	5882	21.55	1.92	FAF127	4	101	6674	14.67	1.5	FA 127	4
78	5189	19.01	2.0	F 127	4	117	5750	12.64	1.6	FAF127	4
90	4498	16.48	2.3	FF 127	4	144	4672	10.27	1.6	F 127	4
101	4004	14.67	2.6			169	3985	8.76	1.7	FF 127	4
117	3450	12.64	2.7			190	3544	7.79	1.9		
144	2803	10.27	2.8			220	3057	6.72	2.2		
169	2391	8.76	2.9			271	2484	5.46	2.3		
190	2126	7.79	3.2			320	2106	4.63	2.7		
220	1834	6.72	3.6								
271	1490	5.46	3.8								

F



输出转速 Output speed r/min	输出扭矩 Output torque Nm	传动比 Ratio i	使用系数 Service factor f _B	机 型 号 Type Type	极 数 Pole p	输出转速 Output speed r/min	输出扭矩 Output torque Nm	传动比 Ratio i	使用系数 Service factor f _B	机 型 号 Type Type	极 数 Pole p
90kW											
45	17998	32.97	0.94								
53	15263	27.96	1.02								
58	13882	25.43	1.11	FA 157	4						
67	12097	22.16	1.40	FAF157	4						
75	10792	19.77	1.48	F 157	4						
88	9198	16.85	1.84	FF 157	4						
106	7621	13.96	2.1								
124	6507	11.92	2.3								
58	13920	25.50	0.81								
69	11764	21.55	0.96								
78	10378	19.01	1.00								
90	8953	16.48	1.15								
101	8008	14.67	1.29	FA 127	4						
117	6900	12.64	1.33	FAF127	4						
144	5606	10.27	1.36	F 127	4						
169	4782	8.76	1.59	FF 127	4						
190	4253	7.79	1.60								
220	3668	6.72	1.79								
271	2981	5.46	1.89								
320	2528	4.63	2.2								
110kW											
53	18530	27.96	0.91								
67	14686	22.16	1.15	FA 157	4						
75	13102	19.77	1.22	FAF157	4						
88	11167	16.85	1.52	F 157	4						
107	9252	13.96	1.73	FF 157	4						
125	7900	11.92	1.90								
132kW											
67	17623	22.16	0.96	FA 157	4						
75	15723	19.77	1.02	FAF157	4						
88	13400	16.85	1.26	F 157	4						
107	11102	13.96	1.44	FF 157	4						
125	9480	11.92	1.59								
160kW											
88	16243	16.85	1.04	FA 157	4						
107	13457	13.96	1.19	FAF157	4						
125	11491	11.92	1.31	F 157	4						
125	11491	11.92	1.31	FF 157	4						
200kW											
88	20304	16.85	0.83	FA 157	4						
107	16821	13.96	0.95	FAF157	4						
125	14363	11.92	1.05	F 157	4						
125	14363	11.92	1.05	FF 157	4						

F



Mamax Permissible torque Nm	输出转速 Output speed r/min	传动比 Ratio i	机型号 Type Type	功率 Power kW/4p	Mamax Permissible torque Nm	输出转速 Output speed r/min	传动比 Ratio i	机型号 Type Type	功率 Power kW/4p	
200	5.3	262	FA 37R17 FAF37R17 F 37R17 FF 37R17	0.18	1500	2.3	600	FA 77R37 FAF77R37 F 77R37 FF 77R37	0.55	
	6.1	229				2.6	525			
	7.0	200				3.0	469			
	8.2	170				3.4	412			
	9.1	153	3.9	357		0.75				
	10	133	4.4	314						
	11	129								
400	2.5	563	FA 47R17 FAF47R17 F 47R17 FF 47R17	0.18	3000	0.33	4245	FA 87R57 FAF87R57 F 87R57 FF 87R57	0.18	
	2.9	477				0.37	3721			
	3.1	445				0.43	3244			
	3.6	389				0.48	2881			
	4.0	346				0.54	2575			0.25
	4.6	304				0.63	2199			
	4.7	293				0.72	1930			
	6.0	230				0.81	1709			0.37
	6.4	216				0.93	1493			
	7.4	188				1.1	1300			
	7.9	176				1.2	1148			
9.4	148	1.4	1010	0.55						
11	130	1.6	887							
600	1.6	856	FA 57R37 FAF57R37 F 57R37 FF 57R37	0.18	4300	1.8	780	FA 97R57 FAF97R57 F 97R57 FF 97R57	0.18	
	1.9	749				2.1	674			
	2.1	658				2.3	609			
	2.5	549				2.7	515			1.1
	2.9	483				3.1	452			
	3.3	426				4.0	345			1.5
	3.6	382				0.21	6532			
	4.2	330				0.24	5696			
	4.7	298				0.28	5032			0.25
	5.3	262				0.32	4375			
	6.2	226				0.35	3946			0.37
	7.0	200				0.41	3404			
	8.4	166				0.47	2949			
	9.1	152				0.54	2590			0.55
10	134	0.61	2267							
1.2	1126	0.70	1989	0.75						
1.4	984	0.80	1739							
1.6	864	0.90	1542							
1.9	722	1.0	1340		0.18					
2.2	633	1.2	1182							
2.6	527	1.3	1032		0.25					
2.8	500	1.5	907							
3.1	454	1.8	796							
3.5	392	2.0	700		0.37					
4.2	333	2.3	611							
4.7	297	2.6	534		0.55					
5.3	261	3.0	472							
5.8	238	3.5	410							
7.0	200	3.9	367	1.5						
0.7	2024	4.9	288							
0.81	1728	5.7	247	2.2						
0.91	1543									
1.03	1354									
1.2	1196			3						
1.3	1050									
1.5	907			7840						
1.7	810	0.12	11347							
2.0	710	0.14	10039							
		0.16	8548		0.18					
		0.18	7675							
		0.21	6615							
		0.24	5820		0.25					
		0.27	5223							

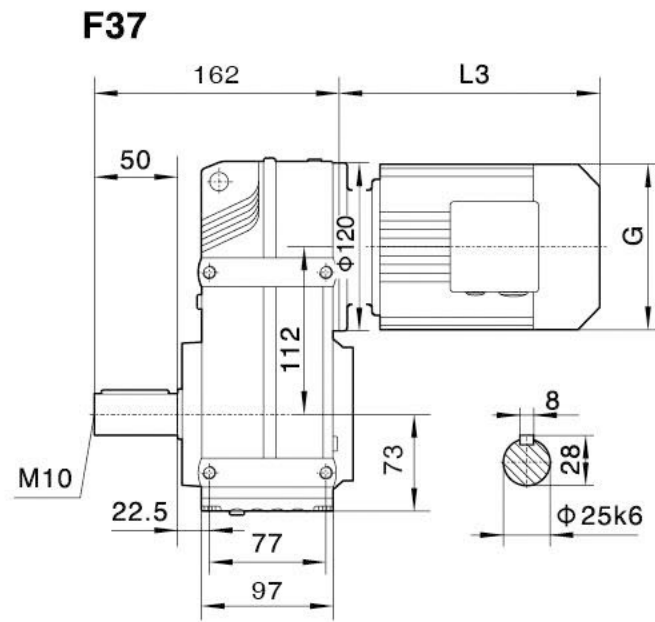
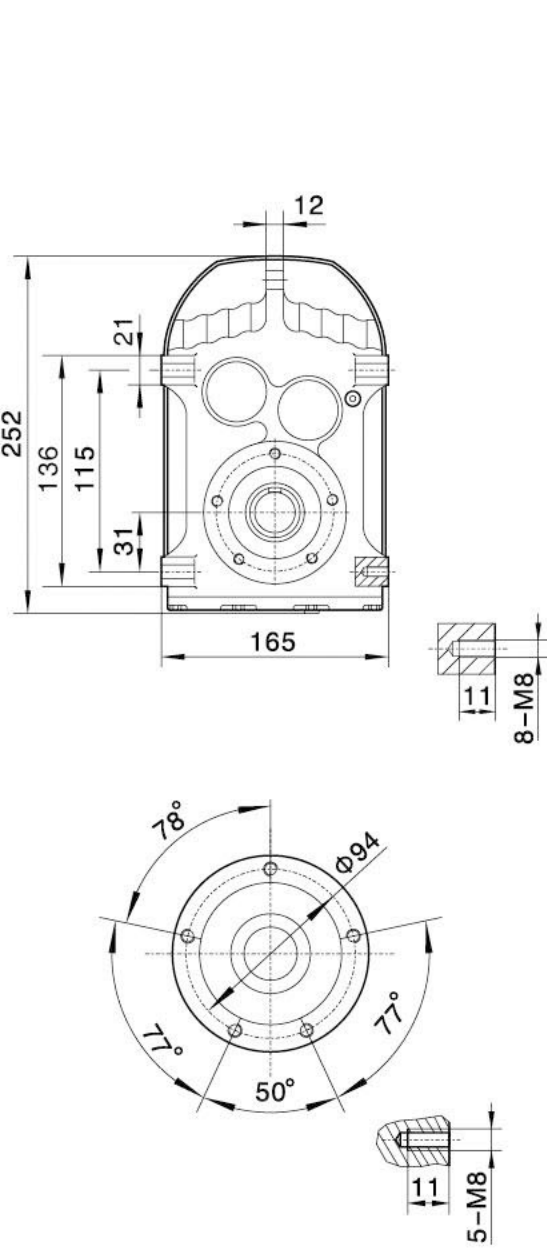
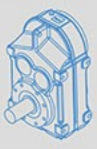
表上所配功率均有超载,按实际条件确定的转矩不得大于减速机额定转矩。

The power are all overload in the table. The decided torque according to operating condition should not more than gear units' nominal torque.

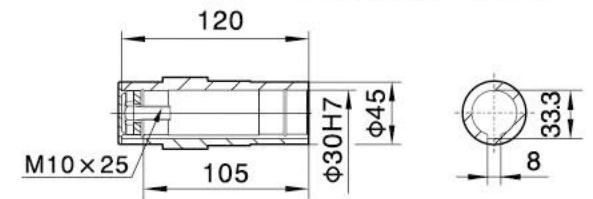


Mamax Permissible torque Nm	输出转速 Output speed r/min	传动比 Ratio i	机型号 Type Type	功率 Power kW/4p	Mamax Permissible torque Nm	输出转速 Output speed r/min	传动比 Ratio i	机型号 Type Type	功率 Power kW/4p
7840	0.30	4567	FA 107R77 FAF107R77 F 107R77 FF 107R77	0.37	18000	0.04	31434	FA 157R97 FAF157R97 F 157R97 FF 157R97	0.55
	0.40	3442				0.05	26173		
	0.46	3037		0.06		23464			
	0.50	2756		0.07		20212			
	0.59	2369		0.08		17984			
	0.67	2068		0.09		16358			
	0.76	1826		0.10		13751			
	0.88	1597		0.11		12235			
	1.0	1401		0.20		7065			
	1.1	1243		0.22		6286			
	1.3	1087		0.26		5404			
	1.5	950		0.14		10033			
	1.7	834		0.16		9021			
	1.9	736		0.17		8026			
	2.3	627		0.29		4831			
	2.5	560		0.34		4124			
	2.9	489		0.50		2776			
	3.3	427		0.57		2427			
	4.0	362		0.64		2185			
	4.3	333		0.39		3602	12000		
0.09	14838	0.09	1308						
0.11	13014	0.11	1169						
0.12	11748	1.1	1308						
0.14	10271	1.2	1169						
0.16	8901	1.5	953						
0.18	7703	1.7	845						
0.21	6768	1.9	764						
0.23	5975	2.1	680						
0.27	5076	2.5	576						
0.31	4466	2.9	503						
0.36	3868	3.3	446						
0.41	3403	4.9	301						
0.47	2987	5.4	272						
0.52	2693	6.3	231						
0.59	2376	7.2	202						
0.68	2054	4.9	196						
0.78	1798	0.55	18.5						
0.86	1619	0.75	15						
1.0	1401	1.1	11						
1.2	1230	1.5	7.5						
1.3	1085	2.2	5.5						
1.5	937	3	4						
1.7	827	4	3						
1.9	733	5.5	3						
2.2	640	7.5	3						
2.7	542	11	3						
2.9	489	5.5	3						
3.4	423	7.5	3						
3.9	371	11	3						
3.0	483	5.5	3						
3.5	417	7.5	3						
3.9	373	11	3						
4.7	312	5.5	3						
5.0	293	7.5	3						
7.3	200	11	3						

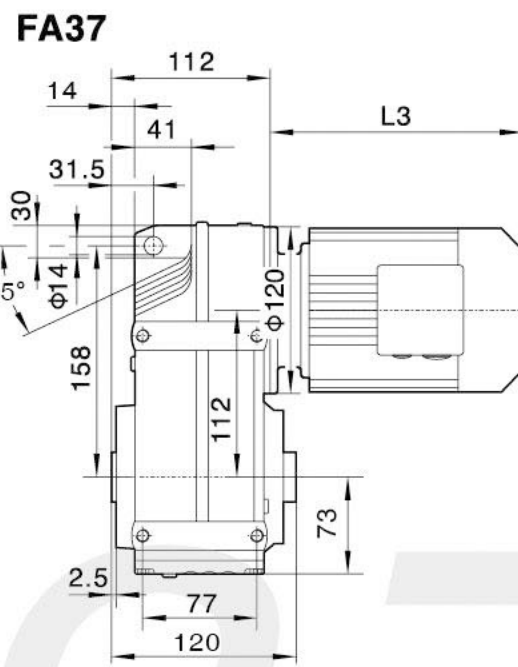
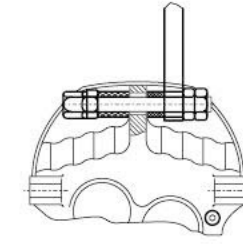
表上所配功率均有超载,按实际条件确定的转扭不得大于减速机额定转扭。 The power are all overload in the table.The decided torque according to operating condition should not more than gear units' nominal torque.



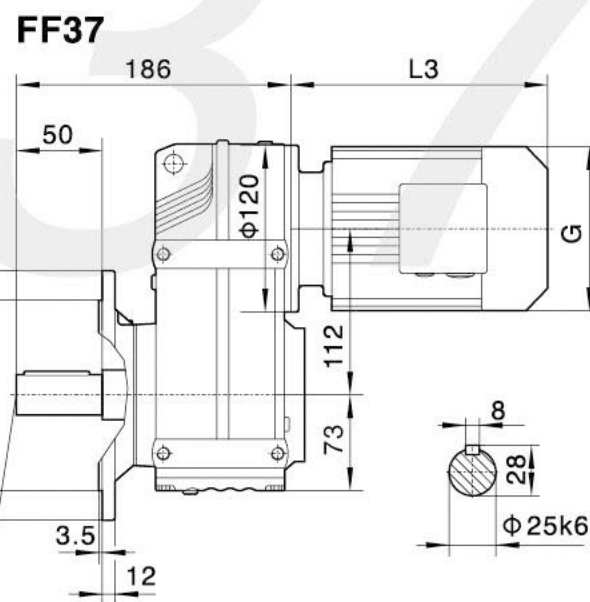
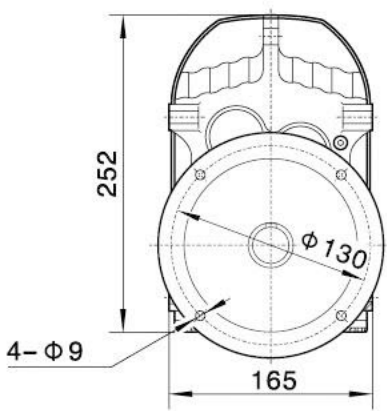
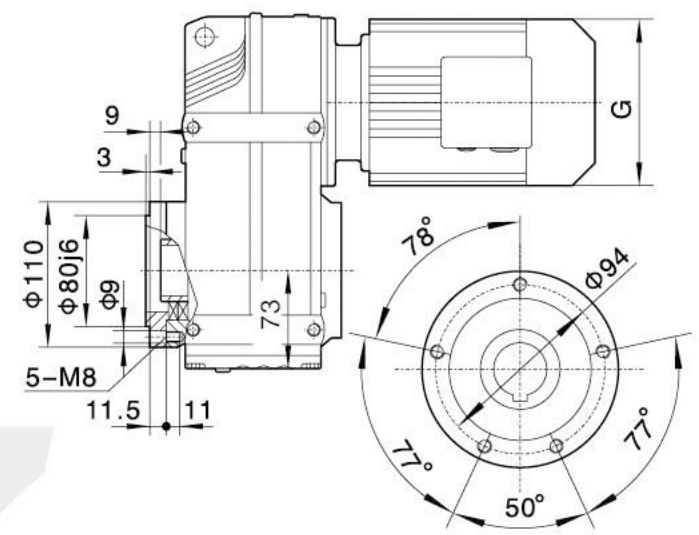
FA37/FAF37/FAZ37空心轴
/Hollow shaft



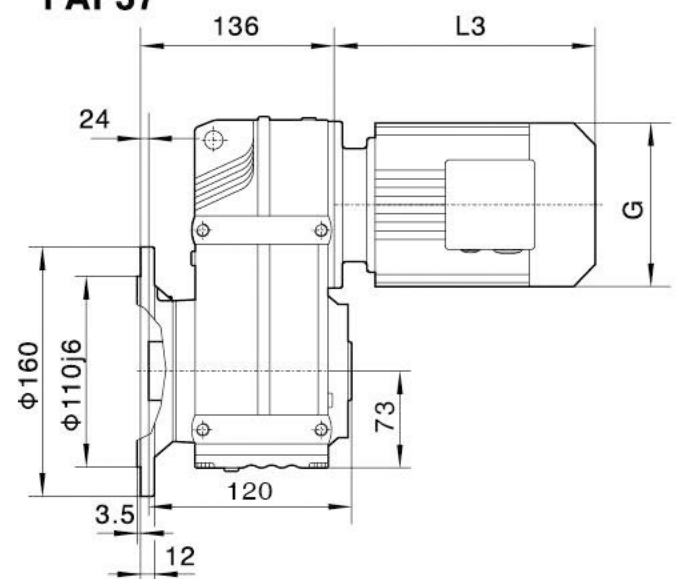
F..T37



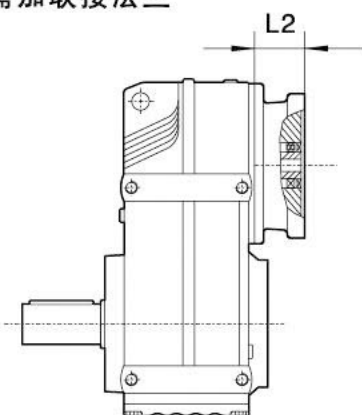
FAZ37



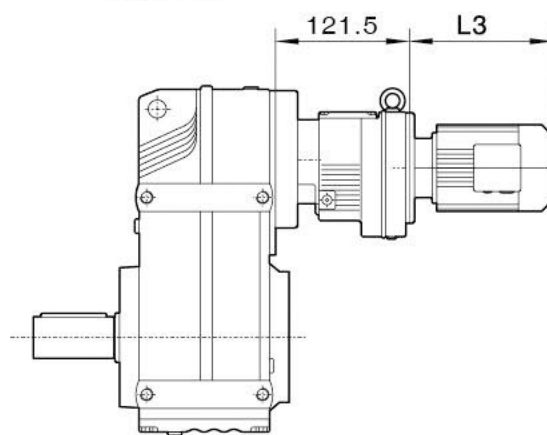
FAF37



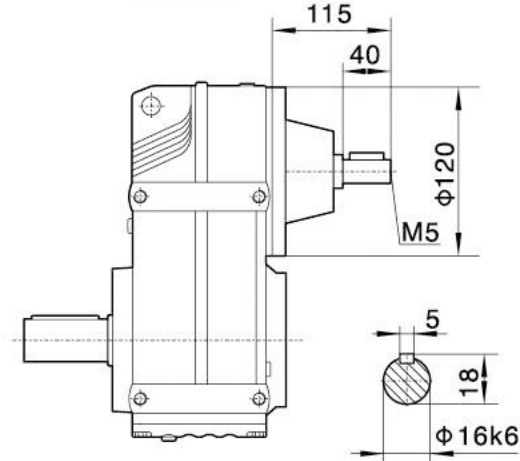
电机需方配或配特殊电机时
需加联接法兰



F..37R17



F..S37



注：其余尺寸见
相对应结构形式

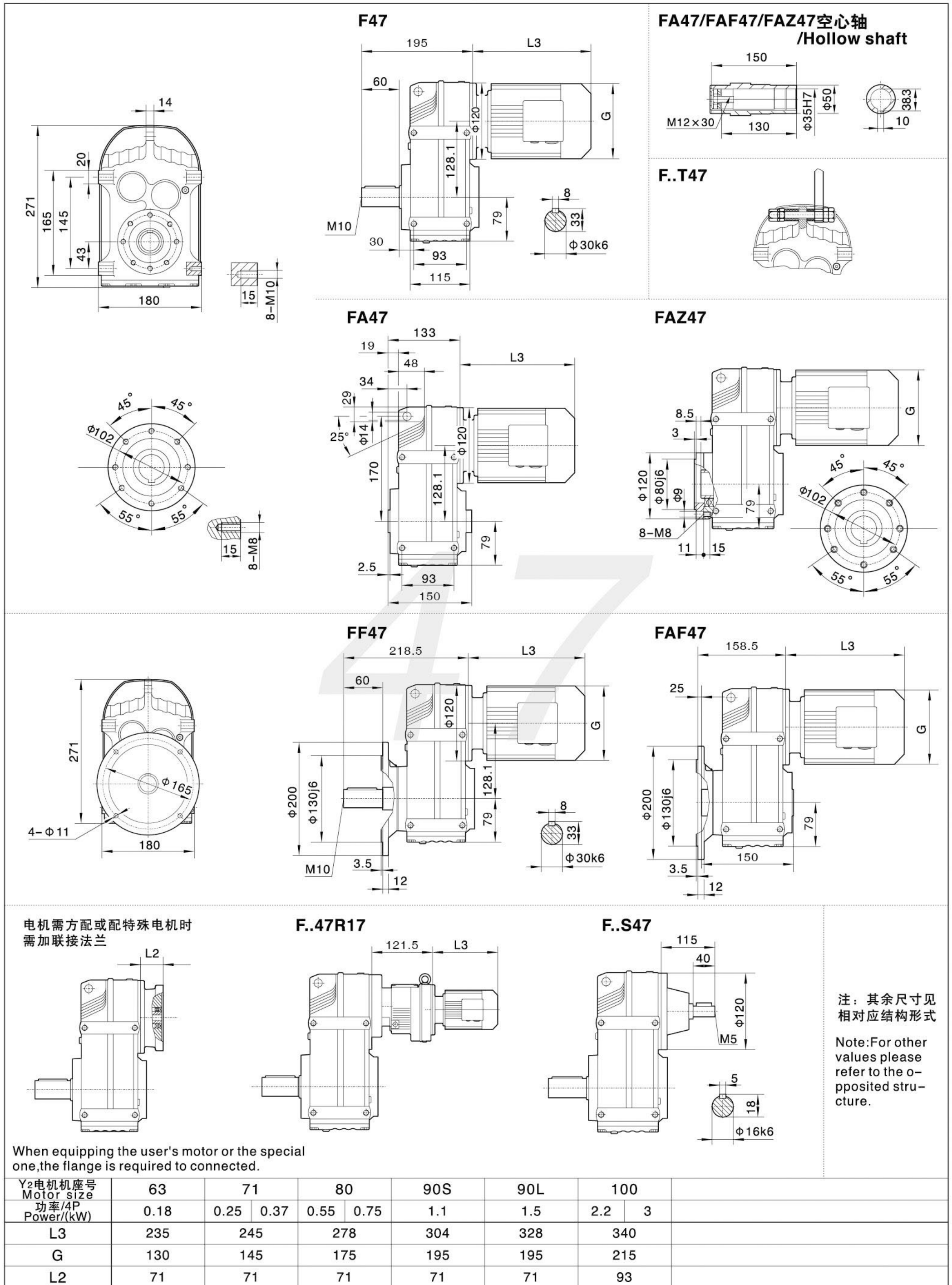
Note: For other
values please
refer to the o-
pposited stru-
cture.

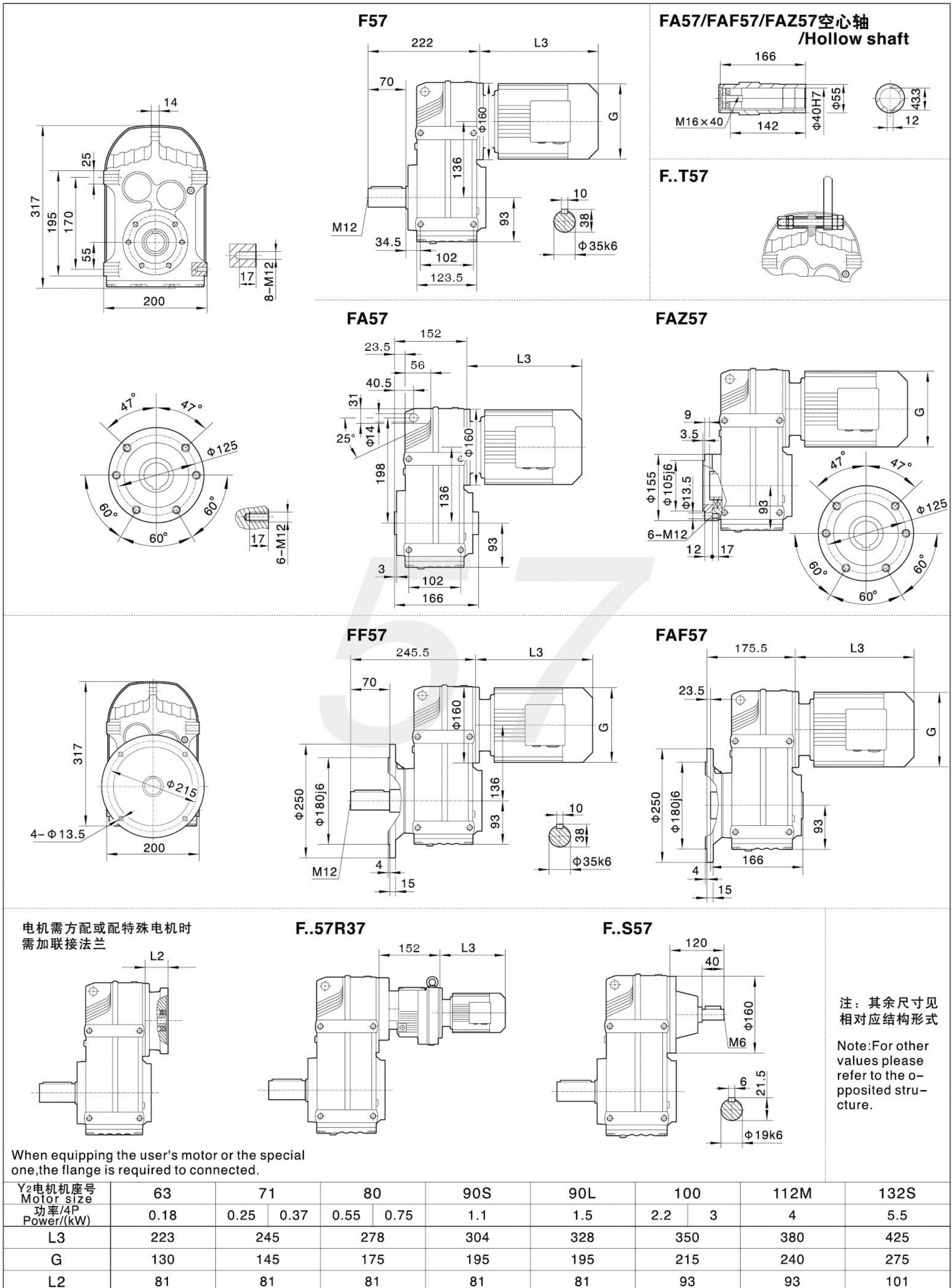
When equipping the user's motor or the special
one, the flange is required to connected.

Y2电机机座号 Motor size	63	71		80		90S	90L	100	
功率/4P Power/(kW)	0.18	0.25	0.37	0.55	0.75	1.1	1.5	2.2	3
L3	235	245		278		304	328	340	
G	130	145		175		195	195	215	
L2	71	71		71		71	71	93	

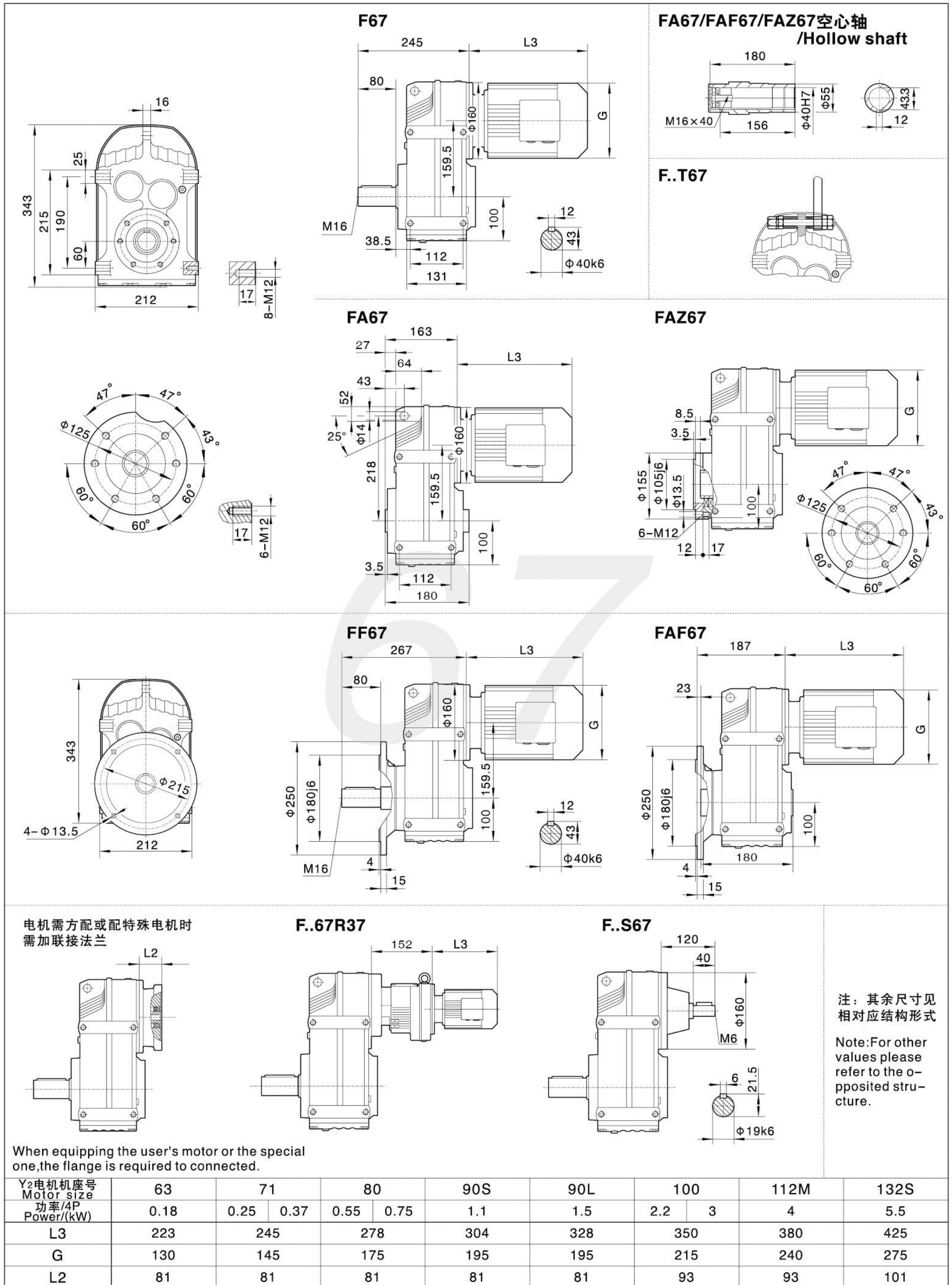
注:1.以上壳体为通用件,安装尺寸均可相互参照 2."F.."表示F、FA、FF、FAF、FAZ

Note:1.The above housings are common parts.The mounting dimensions may consult each other. 2."F.."mean F、FA、FF、FAF、FAZ

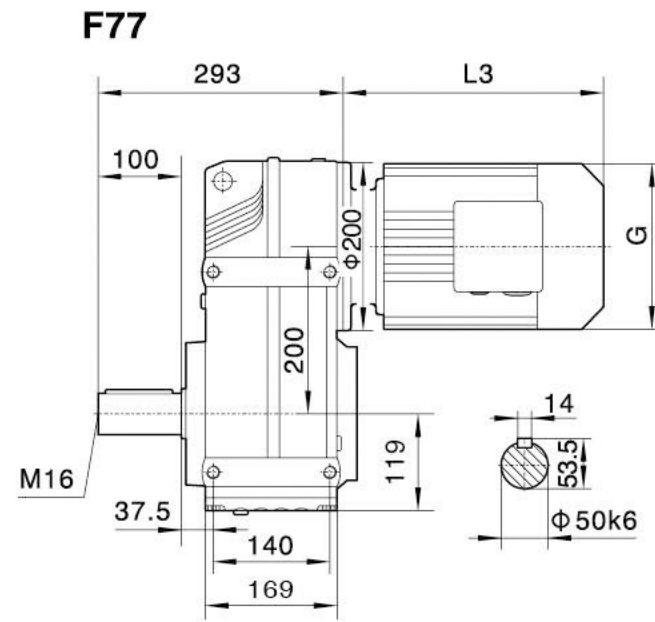
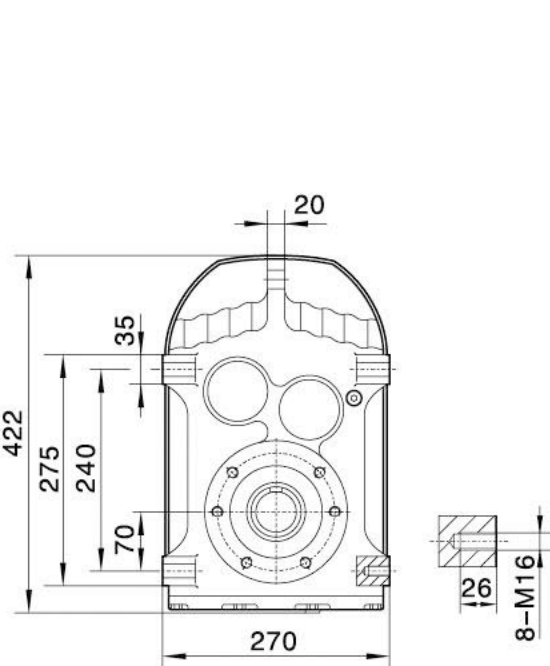
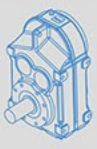




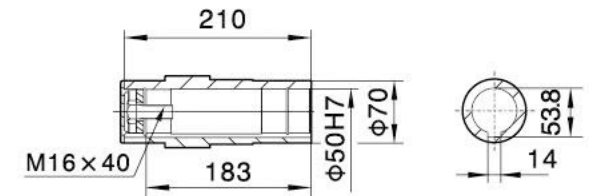
F



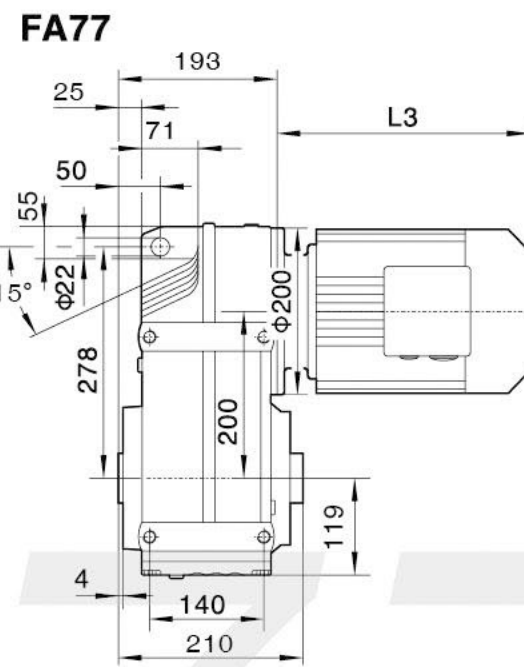
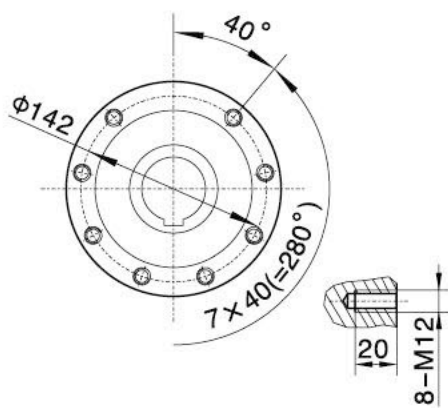
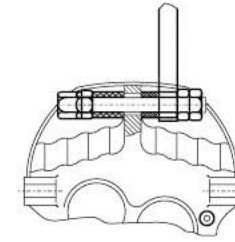
F



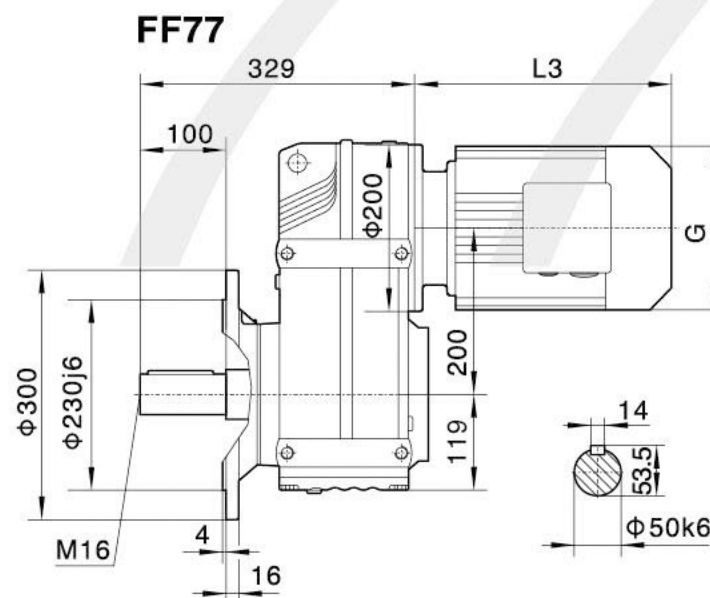
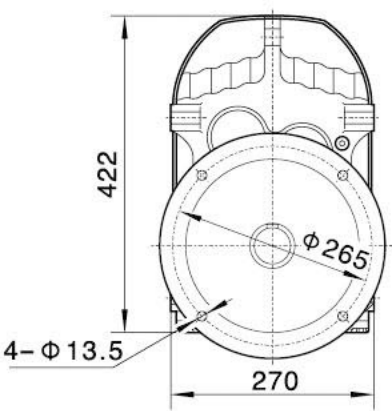
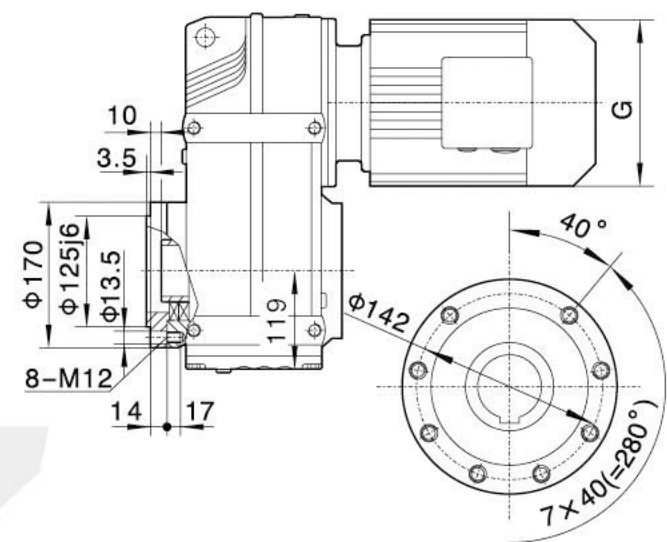
FA77/FAF77/FAZ77空心轴
/Hollow shaft



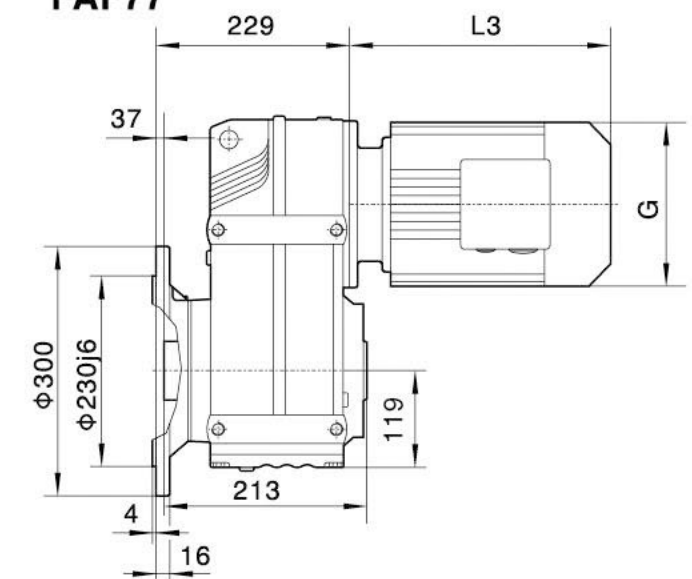
F..T77



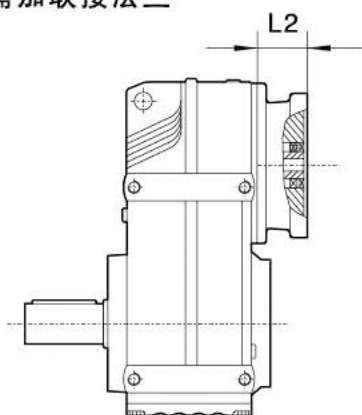
FAZ77



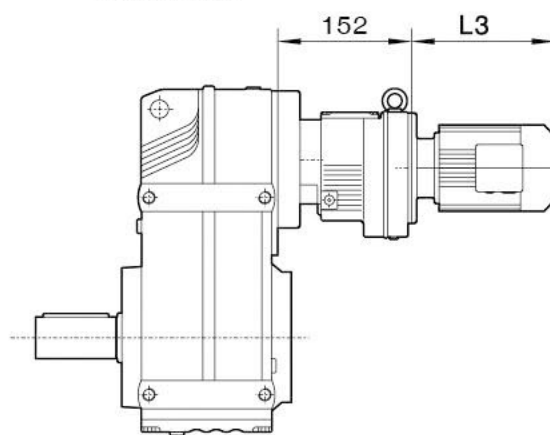
FAF77



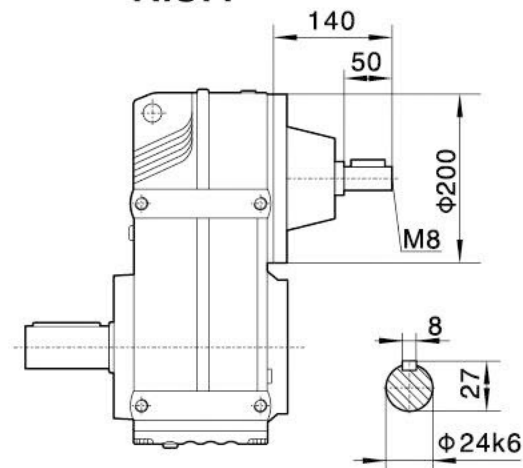
电机需方配或配特殊电机时
需加联接法兰



F..77R37



F..S77



注：其余尺寸见
相对应结构形式

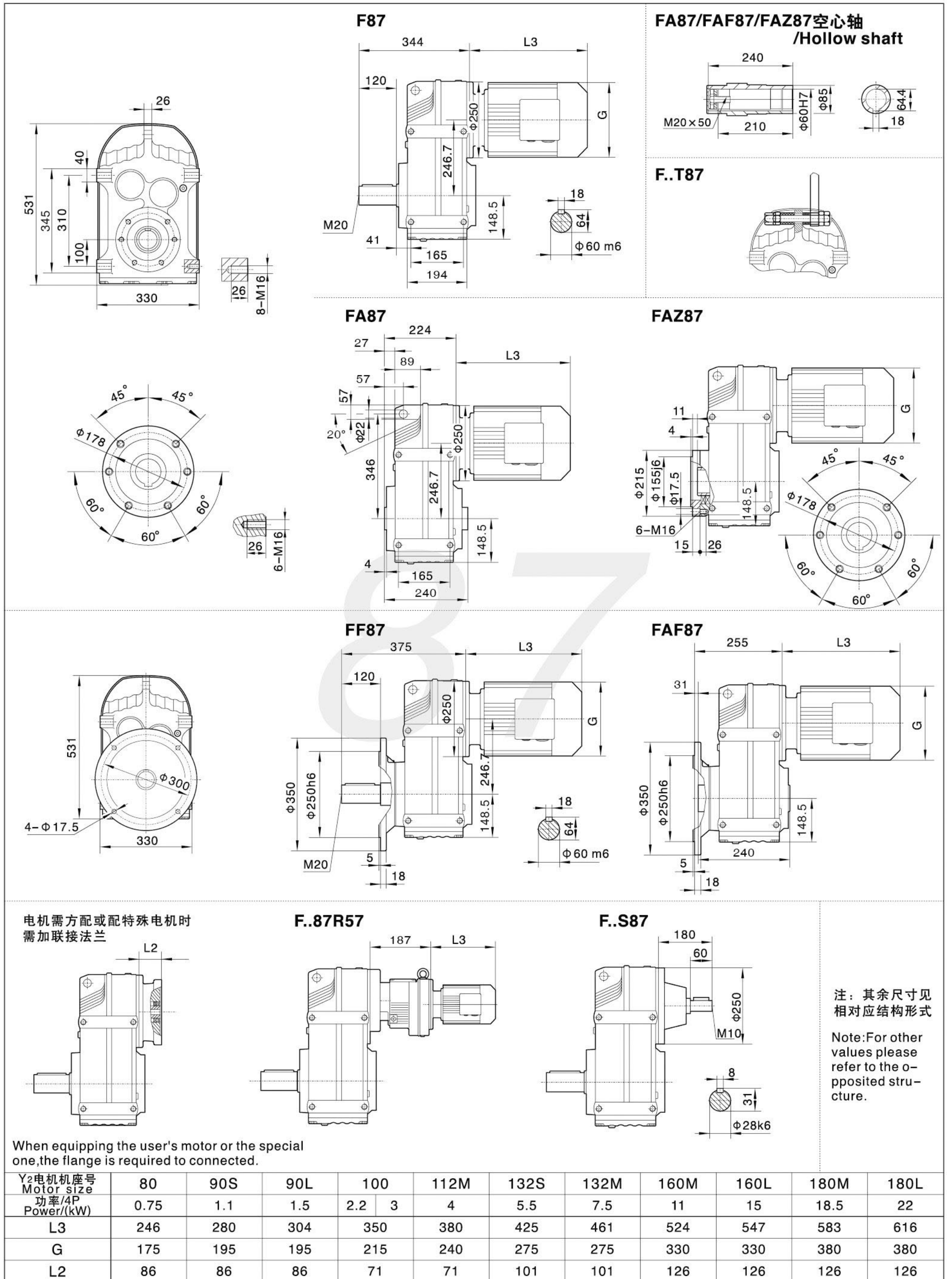
Note: For other
values please
refer to the o-
pposited stru-
cture.

When equipping the user's motor or the special
one, the flange is required to connected.

Y2电机机座号 Motor size	71	80	90S	90L	100	112M	132S	132M	160M
功率/4P Power/(kW)	0.37	0.55 0.75	1.1	1.5	2.2 3	4	5.5	7.5	11
L3	233	278	304	328	350	380	425	461	524
G	145	175	195	195	215	240	275	275	330
L2	81	81	81	81	93	93	101	101	126

注:1.以上壳体为通用件,安装尺寸均可相互参照 2."F.."表示F、FA、FF、FAF、FAZ

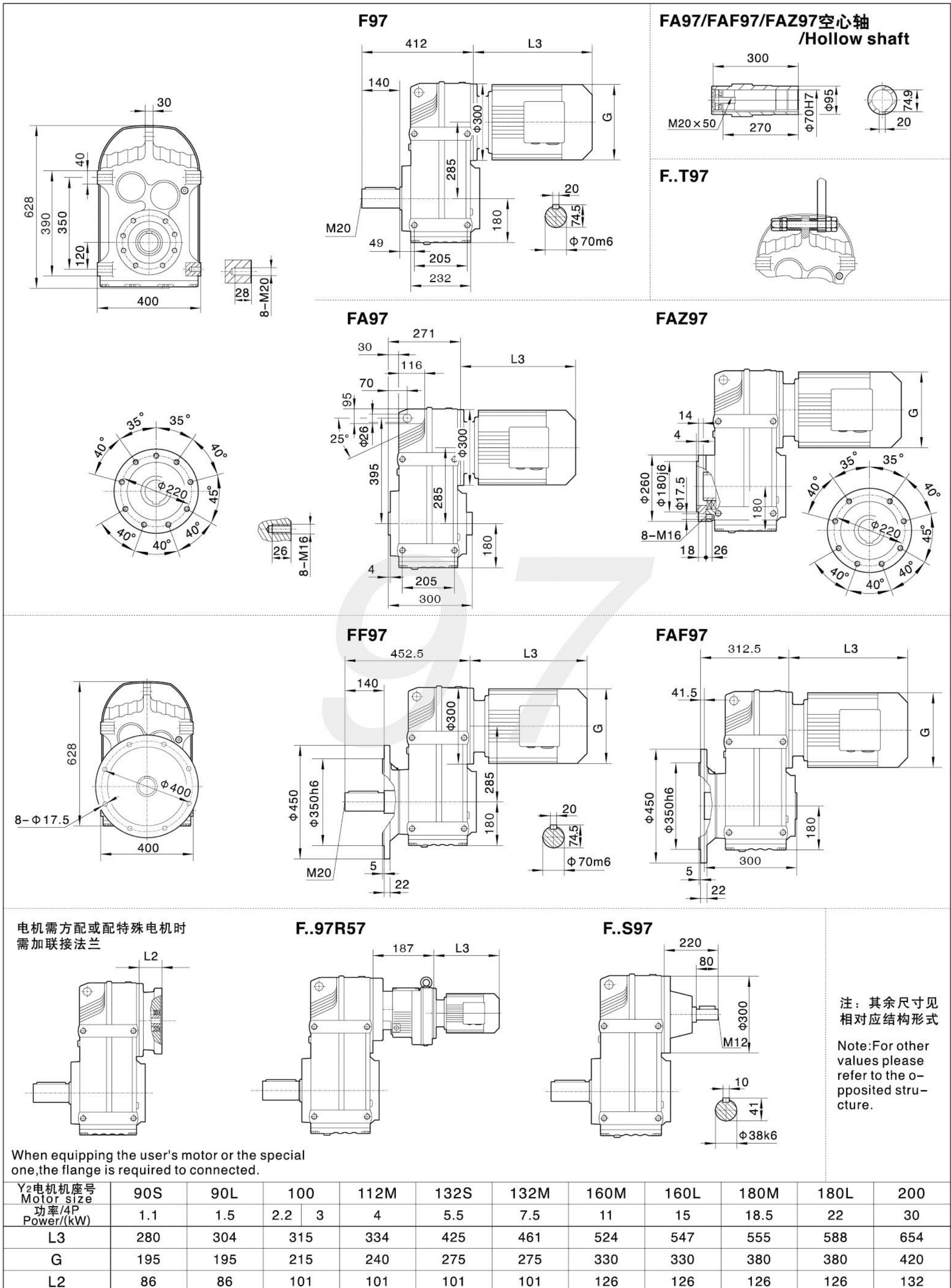
Note:1.The above housings are common parts.The mounting dimensions may consult each other. 2."F.."mean F、FA、FF、FAF、FAZ



F

注:1.以上壳体为通用件,安装尺寸均可相互参照 2."F.."表示F、FA、FF、FAF、FAZ

Note:1.The above housings are common parts.The mounting dimensions may consult each other. 2."F.."mean F、FA、FF、FAF、FAZ



F



F107

FA107/FAF107/FAZ107空心轴 /Hollow shaft

FA107

FAZ107

FF107

FAF107

电机需方配或配特殊电机时需加联接法兰

F..107R77

F..S107

注：其余尺寸见相对应结构形式
Note: For other values please refer to the o-pposited structure.

When equipping the user's motor or the special one, the flange is required to connected.

Y ₂ 电机机座号 Motor size	100	112M	132S	132M	160M	160L	180M	180L	200	225S	225M	
功率/4P Power/(kW)	2.2	3	4	5.5	7.5	11	15	18.5	22	30	37	45
L3	318	334	386	422	504	519	555	588	654	680	702	
G	215	240	275	275	330	330	380	380	420	470	470	
L2	101	101	101	101	126	126	126	126	132	132	132	

注:1.以上壳体为通用件,安装尺寸均可相互参照 2."F.."表示F、FA、FF、FAF、FAZ

Note:1.The above housings are common parts.The mounting dimensions may consult each other. 2."F.."mean F、FA、FF、FAF、FAZ



F

F127

FA127/FAF127/FAZ127空心轴 /Hollow shaft

F..T127

FA127

FAZ127

FF127

FAF127

F..127R77(R87)

F..S127

电机需方配或配特殊电机时需加联接法兰
When equipping the user's motor or the special one, the flange is required to connected.

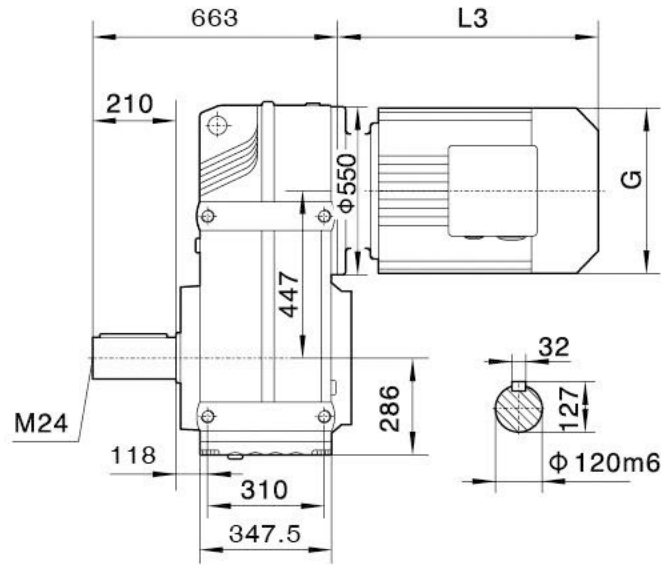
注: 其余尺寸见相对应结构形式
Note: For other values please refer to the o-pposited stru-cture.

	F..127R77		F..127R87								
L	230	275									
Y ₂ 电机机座号 Motor size	132M	160M	160L	180M	180L	200	225S	225M	250	280S	280M
功率/4P Power/(kW)	7.5	11	15	18.5	22	30	37	45	55	75	90
L3	424	567	602	583	616	654	674	696	775	847	847
G	275	330	330	380	380	420	470	470	510	580	580
L2	132	132	132	132	132	132	143	143	174	174	174

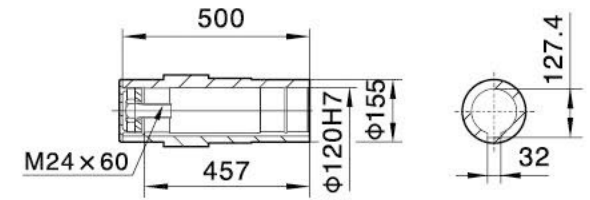
注:1.以上壳体为通用件,安装尺寸均可相互参照 2."F.."表示F、FA、FF、FAF、FAZ
Note:1.The above housings are common parts.The mounting dimensions may consult each other. 2."F.."mean F、FA、FF、FAF、FAZ



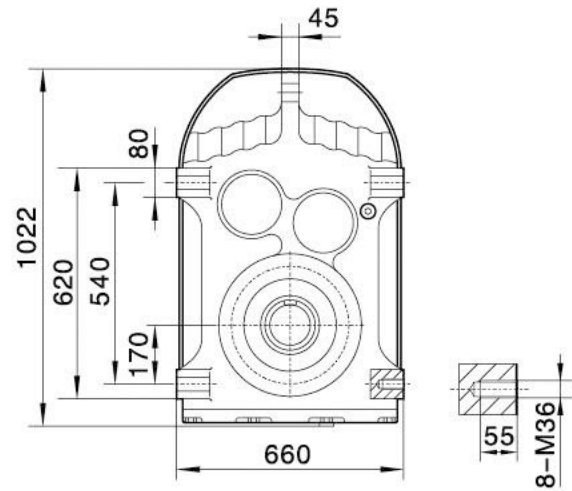
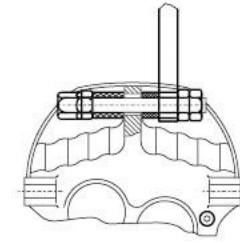
F157



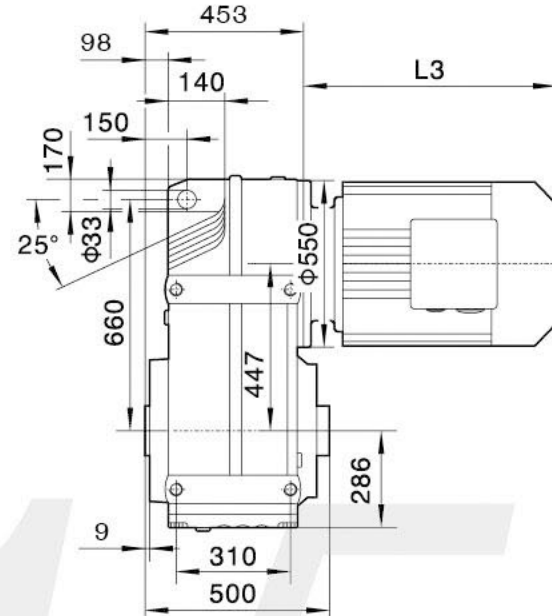
**FA157/FAF157/FAZ157空心轴
/Hollow shaft**



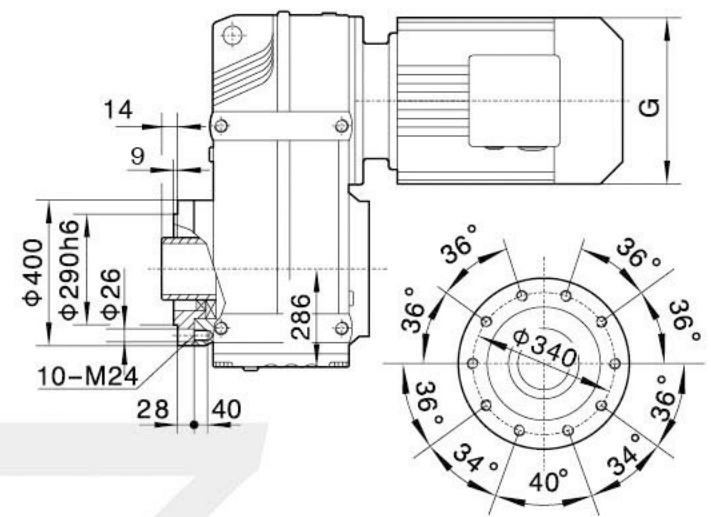
F.T157



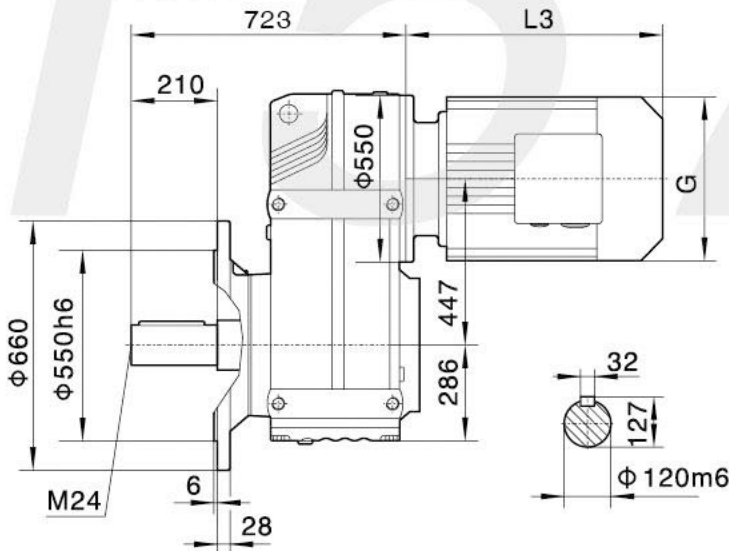
FA157



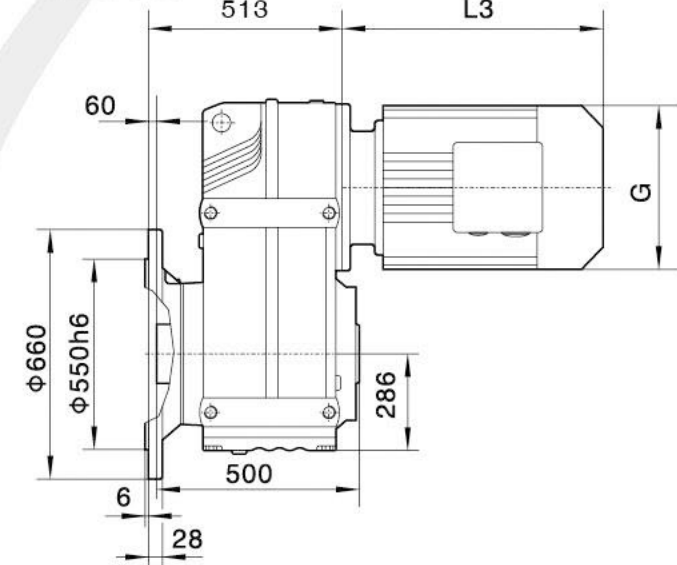
FAZ157



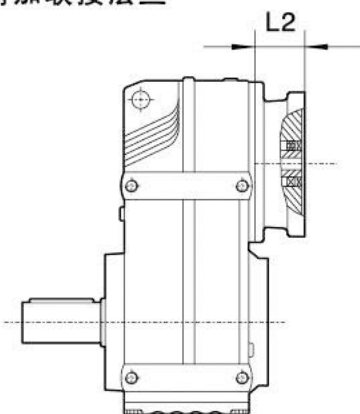
FF157



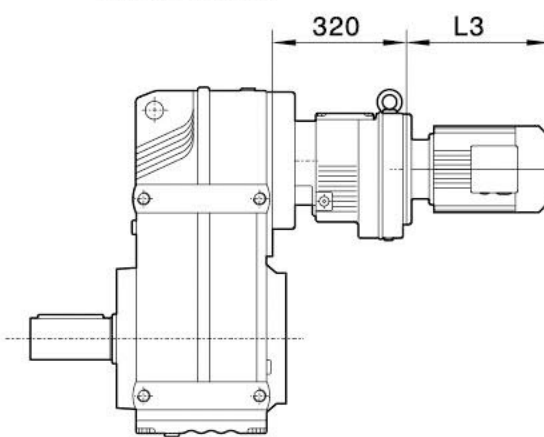
FAF157



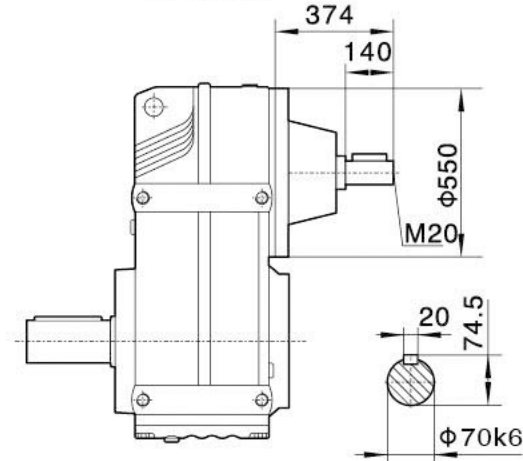
电机需方配或配特殊电机时
需加联接法兰



F..157R97



F..S157



注：其余尺寸见
相对应结构形式

Note: For other
values please
refer to the o-
pposited stru-
cture.

When equipping the user's motor or the special
one, the flange is required to connected.

Y ₂ 电机机座号 Motor size	160M	160L	180M	180L	200	225S	225M	250	280S	280M	315S	315M	315L
功率/4P Power/(kW)	11	15	18.5	22	30	37	45	55	75	90	110	132	160
L3	567	602	635	666	642	669	691	770	828	879	1100	1180	1270
G	330	330	380	380	420	470	470	510	580	580	645	645	645
L2	143	143	143	143	143	143	143	143	143	143	145	145	145

注:1.以上壳体为通用件,安装尺寸均可相互参照 2."F.."表示F、FA、FF、FAF、FAZ

Note:1.The above housings are common parts.The mounting dimensions may consult each other. 2."F.."mean F、FA、FF、FAF、FAZ